

Final

Environmental Assessment for the 10.32 Acre Golden Pass
Townsite Public Land Withdrawal for
U.S. Army Garrison Fort Sill



EAXX-007-21-001-1737986910

March 2026

CERTIFICATION RELATED TO PAGE LIMITS

The content of this EA has been tailored to ensure that the environmental analysis remains focused on the most relevant issues and critical considerations, consistent with the intent of the page-limit guidance and the agency's professional judgement. Accordingly, I certify that this EA satisfies NEPA's procedural requirements within the prescribed timeline and demonstrates compliance with applicable page-limit standards.

This document is compliant with Section 508 of the Rehabilitation Act of 1973, 29 USC § 794d. This allows assistive technology to be used to obtain the available information from the document. Due to the nature of graphics, figures, tables, and images occurring in the document, accessibility is limited to a descriptive title for each item.

ABBREVIATIONS AND ACRONYMS

ADA	Air Defense Artillery
APE	Area of Potential Effect
AQCR	Air Quality Control Region
AR	Army Regulation
BCC	Birds of Conservation Concern
BLM	Bureau of Land Management
BMP	Best Management Practice
CAA	Clean Air Act
CFR	Code of Federal Regulations
CO	carbon monoxide
CWA	Clean Water Act
DA	Department of the Army
dB	decibel
dBA	A-weighted decibel
DoD	Department of Defense
DOI	U.S. Department of the Interior
EA	Environmental Assessment
EIS	Environmental Impact Statement
EO	Executive Order
ESA	Endangered Species Act
FA	Field Artillery
FEMA	Federal Emergency Management Agency
FLPMA	Federal Land Policy and Management Act
FONSI	Finding of No Significant Impact
Fort Sill	U.S. Army Garrison Fort Sill
FR	Federal Register
HMWMP	Hazardous Material/Hazardous Waste Management Plan
ICRMP	Integrated Cultural Resources Management Plan
INRMP	Integrated Natural Resources Management Plan
IPaC	USFWS Information for Planning and Consultation
MBTA	Migratory Bird Treaty Act

MOU	Memorandum of Understanding
NAAQS	National Ambient Air Quality Standards
NAGPRA	Native American Graves Protection and Repatriation Act
NEPA	National Environmental Policy Act of 1969
NHPA	National Historic Preservation Act of 1966
NO ₂	nitrogen dioxide
NPDES	National Pollutant Discharge Elimination System
NRCS	National Resources Conservation Service
NRHP	National Register of Historic Places
NWS	National Weather Service
O ₃	ozone
OAS	Oklahoma Archeological Survey
OBIS	Oklahoma Biodiversity Information System
ODEQ	Oklahoma Department of Environmental Quality
ODWC	Oklahoma Department of Wildlife Conservation
ONHI	Oklahoma Natural Heritage Inventory
OWRB	Oklahoma Water Resources Board
Pb	lead
PLO	Public Land Order
PM _{2.5}	particulate matter less than 2.5 microns in diameter
PM ₁₀	particulate matter less than 10 microns in diameter
ppb	parts per billion
ppm	parts per million
RMP	Oklahoma, Kansas, and Texas Approved Resource Management Plan
ROI	region of influence
SHPO	State Historic Preservation Office
SO ₂	sulfur dioxide
TCP	Traditional Cultural Places
USACE	U.S. Army Corps of Engineers
USAG	U.S. Army Garrison
U.S.C.	U.S. Code
USEPA	U.S. Environmental Protection Agency
USFWS	U.S. Fish and Wildlife Service

USGS

U.S. Geological Survey

WMWR

Wichita Mountains National Wildlife Refuge

TABLE OF CONTENTS

ABBREVIATIONS AND ACRONYMS.....	II
TABLE OF CONTENTS	1-1
1.0 PURPOSE OF AND NEED FOR THE PROPOSED ACTION	1-3
1.1 INTRODUCTION	1-3
1.2 BACKGROUND.....	1-4
1.3 PURPOSE AND NEED.....	1-5
1.4 INTERAGENCY COORDINATION AND CONSULTATION.....	1-6
1.5 ENVIRONMENTAL REVIEW PROCESS.....	1-6
1.5.1 <i>National Environmental Policy Act</i>	1-6
1.5.2 <i>Relevant Laws and Regulations</i>	1-7
1.6 ORGANIZATION AND SCOPE OF THE ENVIRONMENTAL ASSESSMENT	1-7
2.0 PROPOSED ACTION AND ALTERNATIVE.....	2-1
2.1 DESCRIPTION OF THE PROPOSED ACTION.....	2-1
2.2 NO ACTION ALTERNATIVE.....	2-2
2.3 SUMMARY OF ENVIRONMENTAL CONSEQUENCES OF ALTERNATIVES CARRIED FORWARD	2-2
3.0 AFFECTED ENVIRONMENT AND ENVIRONMENTAL CONSEQUENCES	3-1
3.1 RESOURCES NOT CARRIED FORWARD FOR DETAILED ANALYSIS	3-1
3.2 RESOURCES CONSIDERED IN DETAIL	3-2
3.2.1 <i>Air Quality</i>	3-2
3.2.1.1 Definition of Resource.....	3-3
3.2.1.2 Affected Environment.....	3-3
3.2.1.3 Environmental Consequences	3-5
Evaluation Criteria	3-5
Proposed Action	3-5
No Action Alternative	3-5
General Conformity.....	3-5
3.2.2 <i>Biological Resources</i>	3-5
3.2.2.1 Definition of Resource.....	3-5
3.2.2.2 Affected Environment.....	3-7
Vegetation	3-7
Wildlife	3-8
Protected Species.....	3-8
Tricolored Bat (<i>Perimyotis subflavus</i>).....	3-9
Monarch Butterfly (<i>Danaus plexippus</i>).....	3-10
Migratory Birds	3-10
3.2.2.3 Environmental Consequences	3-12
Evaluation Criteria	3-12
Proposed Action	3-12
No Action Alternative	3-12
3.2.3 <i>Cultural Resources</i>	3-12
3.2.3.1 Definition of Resource.....	3-13
3.2.3.2 Affected Environment.....	3-14
3.2.3.3 Environmental Consequences	3-14
Proposed Action	3-15
No Action Alternative	3-15
3.2.4 <i>Geological and Soil Resources</i>	3-15

3.2.4.1	Definition of Resource.....	3-15
3.2.4.2	Affected Environment.....	3-16
3.2.4.3	Environmental Consequences.....	3-19
	Evaluation Criteria.....	3-19
	Proposed Action.....	3-19
	No Action Alternative.....	3-20
3.2.5	<i>Land Use</i>	3-20
3.2.5.1	Definition of Resource.....	3-20
3.2.5.2	Affected Environment.....	3-20
	Wilderness Act.....	3-21
3.2.5.3	Environmental Consequences.....	3-23
	Proposed Action.....	3-23
	No Action Alternative.....	3-23
3.2.6	<i>Noise</i>	3-23
3.2.6.1	Definition of the Resource.....	3-23
3.2.6.2	Affected Environment.....	3-25
3.2.6.3	Environmental Consequences.....	3-25
	Proposed Action.....	3-25
	No Action Alternative.....	3-25
3.2.7	<i>Water Resources</i>	3-25
3.2.7.1	Definition of Resource.....	3-26
3.2.7.2	Affected Environment.....	3-27
3.2.7.3	Environmental Consequences.....	3-29
	Proposed Action.....	3-29
	No Action Alternative.....	3-29
4.0	REFERENCES.....	4-1
5.0	LIST OF PREPARERS.....	5-1

APPENDICES

Appendix A 1912 Land Patent and Federal Register Excerpts

LIST OF TABLES

TABLE 2-1.	SUMMARY OF ENVIRONMENTAL CONSEQUENCES.....	2-2
TABLE 3-1.	NATIONAL AMBIENT AIR QUALITY STANDARDS.....	3-4
TABLE 3-2.	THREATENED, ENDANGERED, CANDIDATE/PROPOSED SPECIES WITH POTENTIAL TO OCCUR.....	3-9
TABLE 3-3.	MIGRATORY BIRDS.....	3-11
TABLE 3-4.	TYPICAL SOUND LEVELS OF COMMON OUTDOOR SOURCES.....	3-24

LIST OF FIGURES

FIGURE 1-1.	PLAT OF SURVEY BLOCKS 15, 34, 35, 36 GOLDEN PASS ORIGINAL TOWNSITE.....	1-3
FIGURE 1-2.	LOCATION MAP OF U.S. ARMY GARRISON FORT SILL.....	1-4
FIGURE 3-1.	TOPOGRAPHIC MAP OF THE GOLDEN PASS WITHDRAWAL REQUEST AREA (BLUE RECTANGLES), WHICH IS LOCATED IN TRAINING AREA #11 OF U.S. ARMY GARRISON FORT SILL.....	3-16
FIGURE 3-2.	LAND USE CATEGORIES & SPECIAL LAND USE AREAS.....	3-22
FIGURE 3-3.	WATER RESOURCES NEAR THE WITHDRAWAL AREA.....	3-28

1.0 PURPOSE OF AND NEED FOR THE PROPOSED ACTION

1.1 INTRODUCTION

The U.S. Army Garrison Fort Sill (Fort Sill) prepared this Environmental Assessment (EA) to consider the potential effects to the human and natural environment associated with the withdrawal of 10.32 acres, consisting of Blocks 15, 34, 35 and 36 of the Golden Pass Townsite, from the jurisdiction of the U.S. Department of the Interior (DOI)/Bureau of Land Management (BLM) to the Department of Army (DA)/Fort Sill jurisdiction (**Figure 1-1**). The withdrawal is a major federal action transferring jurisdiction over the 10.32 acres of federal land from one federal agency to another [see 43 Code of Federal Regulations (CFR) 2300.0-5(h)]; therefore, the action is subject to compliance with the National Environmental Policy Act of 1969 [NEPA, 42 U.S. Code (U.S.C.) 4321, et seq.]. Fort Sill has prepared this EA in compliance with NEPA; Department of Defense (DoD) NEPA Implementing Procedures issued 30 June 2025; Army Guidance for *DoD NEPA Implementing Procedures* issued 8 August 2025; Army Regulation (AR) 200-1, *Environmental Protection and Enhancement* dated 13 December 2007; and other regulations and policies as applicable. As a Cooperating Agency for this EA, the BLM regulations for land withdrawals [43 CFR 2310.3-2 (3)] provide direction for the development and processing of the case file for submission to the Secretary of the Interior.



Figure 1-1. Plat of Survey Blocks 15, 34, 35, 36 Golden Pass Original Townsite

1.2 BACKGROUND

Fort Sill is located in Comanche County, Oklahoma, and consists of approximately 93,679 acres that stretch approximately 26 miles in an east-west direction. The width varies, depending on location, between 2.5 to 9 miles in a north-south direction. The total acreage consists of approximately 7,066 acres of cantonment area; 85,985 acres of training lands; and 628 acres of open space and other ancillary uses. Fort Sill is bordered on the south by the cities of Lawton and Cache, Oklahoma, and the cities of Elgin and Medicine Park are located to the north. It is located on Interstate 44 and is approximately 90 miles southwest of Oklahoma City, Oklahoma and 50 miles north of Wichita Falls, Texas. The Fort Sill cantonment area is on the southeastern part of the post (**Figure 1-2**). The remaining portion of the installation is surrounded by the Wichita Mountains National Wildlife Refuge (WMWR) which borders Fort Sill on the northwest.

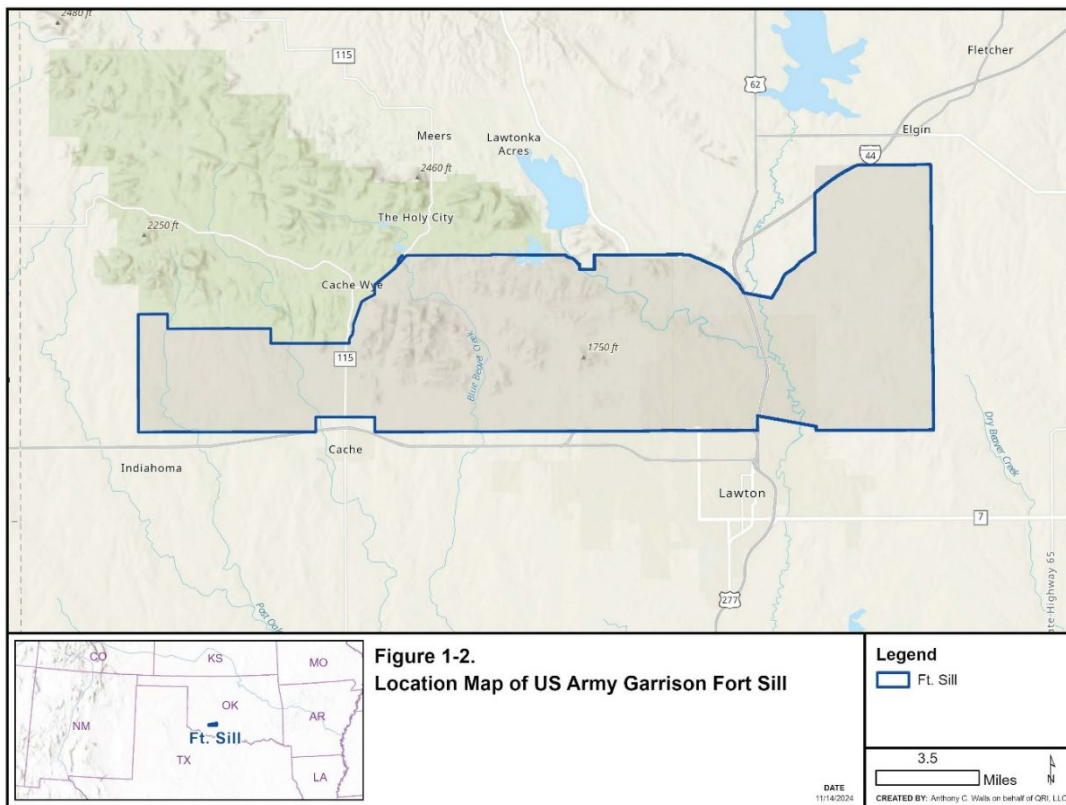


Figure 1-2. Location Map of U.S. Army Garrison Fort Sill

Fort Sill is home to the Fire Centers of Excellence, an organization that combines the U.S. Army Field Artillery (FA) Center and School and the U.S. Army Air Defense Artillery (ADA) Center and School. Principal operational units at Fort Sill include the 75th, 428th, and 434th FA Brigades, and the 30th and 31st ADA Brigades. Fort Sill is also one of four active locations for Army Basic Combat Training and hosts numerous tenant organizations not directly headquartered on the installation. The mission of Fort Sill is to train, educate, and develop soldiers and leaders; create and develop military capabilities; engage, collaborate, and partner with stakeholders; and provide

a fires force to support joint warfighting commanders across the spectrum of operations in the joint and multinational environment.

The town of Golden Pass was established in late 1901 in the Wichita Mountains as part of a local gold rush following the opening of the former Kiowa-Comanche-Apache Reservation to non-Native American settlement on August 6, 1901. As platted in 1906, the town of Golden Pass was planned to cover 120 acres situated in the S/2 of the SE/4 of Section 19 and the SW/4 of the SW/4 of Section 20, Township 3 North, Range 13 West. Blocks 15, 34, 35, and 36 of the Golden Pass Townsite, consisting of 10.32 acres, were designated for school and park purposes in the 1906 Townsite plat, which was approved by the land patent issued January 25, 1912. The Commissioner of the General Land Office approved the land patent on January 9, 1912. This land patent reserved the school and park blocks as part of the public domain consistent with legal requirements for town development during the period in Oklahoma. The town of Golden Pass was evidently abandoned prior to 1909, and despite the reservation to the public domain, the 10.32 acres were not separately identified in the subsequent deeds transferring ownership of the surrounding lands. Although the 10.32 acres were considered part of the Monte Vista Ranch, which by 1941 encompassed over 4,100 acres, the four parcels were reserved to the public domain as part of the Golden Pass Townsite development. These acres were withdrawn from the public domain in 1941 under Executive Order (EO) 8793 [6 Federal Register (FR) 2943, June 18, 1941] and reserved for military purposes. In 1945, EO 9526 (10 FR 2423, March 2, 1945) amended EO 8793, and other withdrawal EOs, by vesting jurisdiction "...in the DOI, and any other department or agency of the Federal Government according to their respective interests then of record" six months after the expiration of the national emergency declared by the May 27, 1941 Proclamation (55 State 1647). Critically, EO 9526 provided that the land remained closed to all forms of appropriation under the public land law, including the mining law. Given the Army's continuing need for the land due to its location within the boundaries of Fort Sill, the DOI transferred the land to Army jurisdiction under section 204 of the Federal Land Policy and Management Act (FLPMA) of 1976, as amended, and issued Public Land Order (PLO) No. 6183 (47 FR 9842, March 8, 1982). PLO No. 6183 was, in turn, extended for another 20 years by PLO No. 7158 (67 FR 11707, March 15, 2002) (**Appendix A**). The withdrawal transferring jurisdiction to the Army expired on March 7, 2022, and the land reverted to the BLM's jurisdiction.

1.3 PURPOSE AND NEED

The purpose of the proposed action is to ensure Fort Sill is still able to continue to use the 10.32-acre Golden Pass Townsite for various training activities as it has done since 1941. Under the proposed action, the Secretary of the Interior would issue a new PLO transferring jurisdiction over these acres to the Army. The previous PLO transferring this jurisdiction expired in 2022. The withdrawal and transfer are needed to avoid a non-DoD agency having land managing authority over property within Fort Sill's range complex. Because the 10.32 acres is completely surrounded by Fort Sill lands, there is no access to the parcels without entering the military reservation.

1.4 INTERAGENCY COORDINATION AND CONSULTATION

As concurred between Fort Sill and BLM in accordance with DoD's NEPA Implementing Procedures, BLM as a cooperating agency was the only agency consulted during preparation of this EA. Additionally, Section 204(b) of the FLMPA requires the Secretary of the Interior to publish notice in the Federal Register of an application for withdrawal within 30 days of its receipt by the Secretary of the Interior. Publication of this notice in the Federal Register initiates a 90-day comment period required in the DOI withdrawal regulations at 43 CFR Part 2300 and offers the opportunity for the public to request that the BLM hold a public meeting regarding the Army's withdrawal application. Concurrent to BLM publishing the Notice of Withdrawal Application for the Army's withdrawal application for the 10.32 acres at Fort Sill in the Federal Register, the Army will have the notice published in The Lawton Constitution, the local newspaper serving the Fort Sill and Comanche County area.

Relative to Section 106 of the National Historic Preservation Act (NHPA), Fort Sill and BLM concurred that the jurisdictional transfer from federal agency to federal agency was not a type of activity with the potential to cause effects, assuming historic properties were present. Accordingly, the agency official had no further obligations in accordance with Section 106's implementing regulations at 36 CFR 800.3(a)(1). Regarding Section 7 of the Endangered Species Act (ESA) (16 U.S.C. Section 1531 et seq), no consultation was necessary based on the determination that the action would have no effect.

The EA and Finding of No Significant Impact (FONSI) can be accessed via the Fort Sill environmental website: <https://sill-www.army.mil/usag/dpw/environmental/>.

1.5 ENVIRONMENTAL REVIEW PROCESS

1.5.1 National Environmental Policy Act

The proposed action has been identified by Fort Sill and BLM as a major federal action triggering an environmental analysis pursuant to the requirements of NEPA. NEPA regulations specify that an EA be prepared to: (1) provide sufficient analysis and evidence for determining whether to prepare an Environmental Impact Statement (EIS) or a FONSI; (2) aid in an agency's compliance with NEPA when an EIS is not necessary; and (3) facilitate preparation of an EIS when necessary. To comply with NEPA and other relevant environmental requirements identified below (Section 1.5.2) and to assess potential environmental impacts, the decision-making process for the proposed action involves a study and examination of all environmental issues pertinent to the 10.32 acre Golden Pass Townsite withdrawal for Fort Sill. For a new PLO to be issued, DOI/BLM requires environmental documentation typically in the form of an EA.

1.5.2 Relevant Laws and Regulations

This EA examines resource areas potentially affected by the proposed action in accordance with other relevant laws, regulations, EOs, and policies as indicated in the following list.

- Archaeological Resources Protection Act of 1979 (16 U.S.C §§ 470aa–470mm)
- BLM Regulations for Land Withdrawals (43 CFR Part 2300)
- Clean Air Act (CAA) (42 U.S.C. § 7401 et seq.)
- Clean Water Act (CWA) (33 U.S.C. § 1251– et seq.)
- Endangered Species Act of 1973 (ESA) (16 U.S.C. §§ 1531–1544)
- Environmental Protection and Enhancement (AR 200-1)
- EO 8793, Withdrawing Public Lands for Use of the War Department; Oklahoma (6 FR 2943, June 18, 1941)
- EO 9526, Amending Certain Executive and Public Land Orders Withdrawing Public Lands for Purposes Incident to the National Emergency and the Prosecution of the War (10 FR 2423, March 2, 1945)
- Federal Land Policy and Management Act of 1976 (FLPMA) (43 U.S.C. Chapter 35 § 1701 et seq.)
- Migratory Bird Treaty Act of 1918 (MBTA) (16 U.S.C. §§ 703–712)
- Native American Graves Protection and Repatriation Act of 1990 (NAGPRA) (25 U.S.C. 3001 et seq.)
- National Historic Preservation Act of 1966 (NHPA) (54 U.S.C. 300101 et seq.)
- National Register of Historic Places (NRHP) (36 CFR 60)
- Protection of Historic Properties (36 CFR Part 800)
- Rehabilitation Act of 1973, Section 508 (29 U.S.C. 794d).

1.6 ORGANIZATION AND SCOPE OF THE ENVIRONMENTAL ASSESSMENT

This EA is organized into five sections and one Appendix. Section 1 provides the purpose of and need for the proposed action. Section 2 describes the proposed action and alternatives, including the alternatives analysis and summary of environmental consequences. Section 3 describes the affected environment and potential environmental consequences. Section 4 provides references used to prepare this EA. Finally, Section 5 provides a list of the EA preparers. **Appendix A** provides the land patent, EOs, and FR excerpts related to the historical withdrawal of the Golden Pass Townsite parcels of land.

This EA analyzes potential effects of the proposed action and no action alternative on the natural and human environment in comparative form. Existing environmental conditions are described and the potential environmental consequences for each action are then analyzed. The potential environmental effects of the proposed action include activities that could potentially impact air quality, biological resources, cultural resources, geological and soil resources, land use, noise, and

water resources. This EA also identifies measures that would prevent or minimize adverse environmental effects, if required.

2.0 PROPOSED ACTION AND ALTERNATIVE

This section presents a description of the proposed action and no action alternative. The details of the proposed action form the basis for the analyses of potential environmental impacts presented in Section 3 of the EA.

2.1 DESCRIPTION OF THE PROPOSED ACTION

The proposed action is the transfer of jurisdiction over the 10.32-acre Golden Pass Townsite from BLM to Fort Sill for 20 years. The prior PLO expired in 2022. The proposed action is located in Comanche County, Oklahoma, and is depicted in **Figure 1-1** and **Figure 2-1**. The approved legal land description is all of Blocks 15, 34, 35, and 36, Golden Pass Townsite, Oklahoma. The area described is 10.32 acres. This legal land description is corrected to meet BLM Specifications for Descriptions of Land (2017). The boundary from the previous withdrawal has not changed, nor were any lands within the boundary added or removed since the area was withdrawn in 1941. The need for the proposed action is to continue Fort Sill’s administrative authority over the land in support of mission requirements.

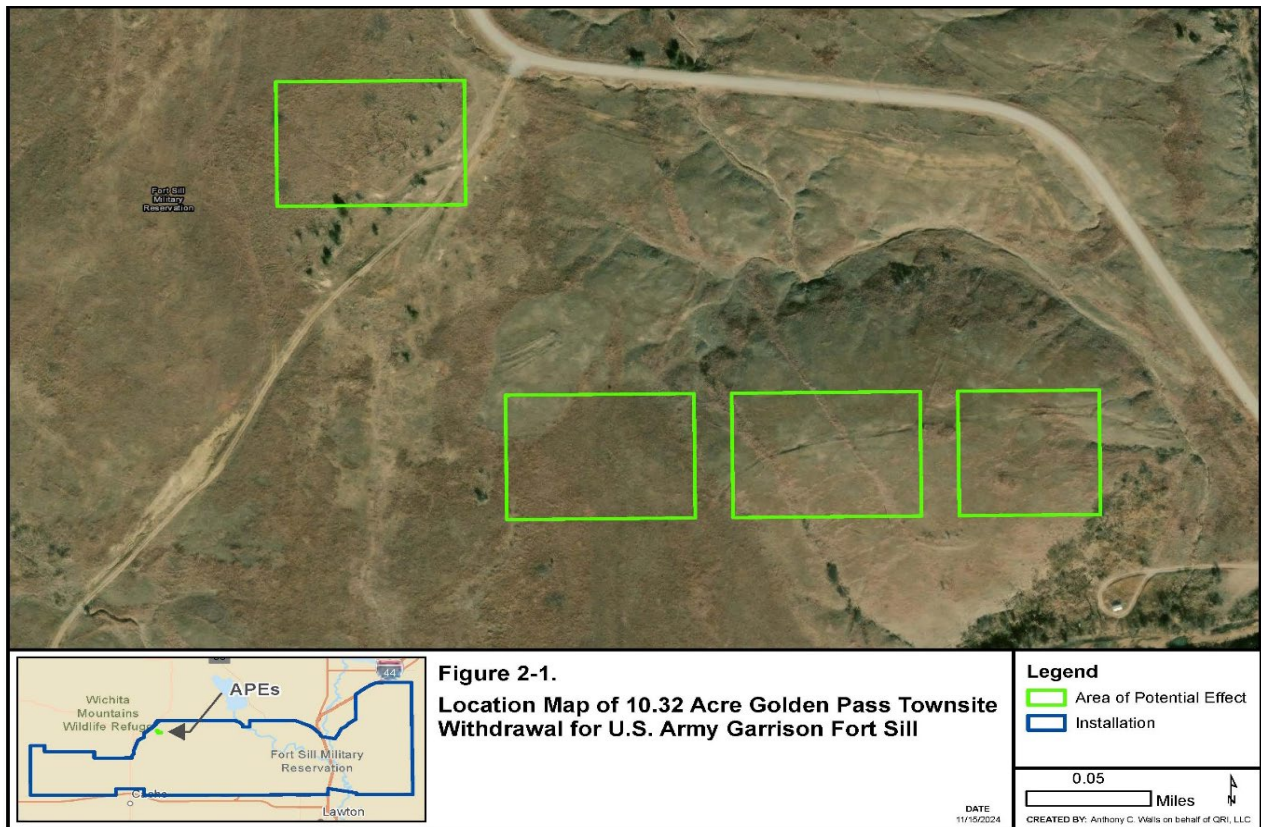


Figure 2-1. Location Map of 10.32 Acre Golden Pass Townsite Withdrawal for U.S. Army Garrison Fort Sill

2.2 NO ACTION ALTERNATIVE

Under the no action alternative for this EA, the Secretary of the Interior would not transfer jurisdiction over the 10.32 acres to the Army. Instead, the BLM Oklahoma Field Office would retain jurisdiction and manage the 10.32 acres in accordance with the land use allocations and management goals and objectives identified in the 2020 Oklahoma, Kansas, and Texas Approved Resource Management Plan [(RMP) BLM 2020]. Due to the limited total acreage that is separated into four discontinuous parcels, the indistinguishable nature of the parcels from the surrounding Fort Sill lands, and the location of the land in a military training area within the Fort Sill installation boundary, the BLM’s ability to feasibly use these public lands and resources would be difficult; therefore, BLM anticipates that it would leave the 10.32 acres as open space.

For Fort Sill, the designation of the 10.32 acres as open space under BLM’s jurisdiction creates a problematic outlier within its training lands. There are various types of existing restrictions on land use and training activities throughout the Fort Sill range complex, such as agricultural leases and environmental controls; however, all of these restrictions are administered by Fort Sill in support of Fort Sill’s military mission. If the no action alternative is implemented and BLM retains jurisdictional authority over the 10.32 acres, Fort Sill would not have autonomous administration of its range complex for mission purposes. Although the no action alternative does not meet the purpose and need of the action, it has been carried forward for detailed analysis in the EA as required under NEPA.

2.3 SUMMARY OF ENVIRONMENTAL CONSEQUENCES OF ALTERNATIVES CARRIED FORWARD

Table 2-1 provides a summary of the environmental consequences of the proposed action compared to the no action alternative. The environmental consequences analyses are presented in Section 3 of this EA.

Table 2-1. Summary of Environmental Consequences

Resource	Proposed Action	No Action Alternative
Air Quality	No change; no significant impacts	No significant impacts
Biological Resources	No change; no significant impacts	No significant impacts
Cultural Resources	No change; no significant impacts	No significant impacts
Geological and Soil Resources	No change; no significant impacts	No significant impacts
Land Use	No change; no significant impacts	Impact on the Army’s mission because the land could not be used as needed for military purposes.

Resource	Proposed Action	No Action Alternative
Noise	No change; no significant impacts	No significant impacts
Water Resources	No change; no significant impacts	No significant impacts

3.0 AFFECTED ENVIRONMENT AND ENVIRONMENTAL CONSEQUENCES

This section describes relevant and existing environmental conditions for resources potentially affected by the proposed action in the 10.32 acre parcels of land. It is based on activities that could cause impacts to the identified resources that have already occurred, are currently occurring, and will continue to occur in the foreseeable future. Information gathered from coordination with installation and BLM personnel and review of existing documents was used to describe the affected environment. In compliance with NEPA and DoD NEPA Implementing Procedures, this section focuses on resources that could be affected by the proposed action in the 10.32 acre parcels. More specifically, this section presents the potential environmental consequences of implementing the proposed action and the no action alternative on air quality, biological resources, cultural resources, geological and soil resources, land use, noise, and water resources. Effects of the proposed action were considered negligible if they were not measurably different from existing conditions and minor if the effects were considered small but measurable.

3.1 RESOURCES NOT CARRIED FORWARD FOR DETAILED ANALYSIS

As part of the EA process issues addressed in prior environmental reviews, or issues that are not significant, may be eliminated from discussion. The following paragraphs describe the resources that were not considered further for detailed analysis and provide the rationale for the determinations.

Airspace – The withdrawal of the Golden Pass Townsite would be consistent with current airspace uses under the proposed action. The Golden Pass Townsite would be left as open land by the BLM under the no action alternative, which would also be consistent with current airspace uses. The airspace over Fort Sill is restricted and would remain so regardless of the activities in the 10.32 acres. Therefore, further analysis of airspace was deemed unnecessary.

Socioeconomics – There is no potential for significant adverse or beneficial impacts to areas outside the boundary of Fort Sill from the implementation of the proposed action or no action alternative because socioeconomics would remain unchanged from existing conditions. More specifically, there are no anticipated changes to the social or economic character (i.e., demographics, employment, income levels, housing and service markets cohesiveness, or public services) or local communities as a consequence of implementation of the proposed action or no action alternative. The Golden Pass Townsite would be left as open land by the BLM under the no action alternative and would not result in socioeconomic change. Therefore, further analysis of socioeconomics was deemed unnecessary.

Hazardous Toxic Materials and Waste – Fort Sill manages hazardous materials and hazardous waste in accordance with federal, Oklahoma, and local rules and regulations vis-à-vis its *Hazardous Material/Hazardous Waste Management Plan* (HMWMP) (Fort Sill 2023).

Additionally, the Army controls hazardous materials in accordance with AR 200-1, *Environmental Protection and Enhancement*, which contains Army policy for hazardous materials and hazardous waste management (U.S. Army 2007). The proposed action would not disturb or create contaminated sites resulting in negative effects on human health or the environment. Therefore, further analysis of hazardous toxic materials and waste was deemed unnecessary.

Human Health and Safety – “Safety Regulation” (AR 385-10) establishes risk management as the Army’s principal risk reduction methodology and ensures regulatory and statutory compliance. This Safety Regulation provides for public safety in relation to Army operations and activities. All activities at Fort Sill abide by applicable federal and state, DoD, Army, and installation-level occupational health, safety, and environmental requirements. The protection of human health is an integral part of the Army’s mission at Fort Sill. No change would be expected to human health and safety from the proposed action or no action because the existing military training activities would continue on Fort Sill. The jurisdictional transfer of land from BLM to Fort Sill would not create any health and safety issues. Therefore, no health and safety impacts are anticipated.

Transportation and Traffic – The proposed and no action alternative would not change the transportation system or pattern of traffic flow on Fort Sill. Transportation and traffic would remain unchanged from existing conditions. Therefore, further analysis of transportation and traffic was deemed unnecessary.

Electromagnetic Spectrum – The electromagnetic spectrum is the entire range of electromagnetic radiation, which includes radio waves, microwaves, infrared, visible light, ultraviolet, X-rays, and gamma rays. This radiation travels at the speed of light and is organized by its wavelength and frequency. The jurisdictional transfer from BLM to Fort Sill would not affect electromagnetic radiation by frequency and wavelength. Therefore, the electromagnetic spectrum will remain unchanged from existing conditions and further analysis was deemed unnecessary.

Utilities – There are no utilities located on the Golden Pass Townsite land parcels and Fort Sill has no plans to locate any utilities in the area. The proposed action and no action alternative will not result in any change to utilities; therefore, further analysis was deemed unnecessary.

3.2 RESOURCES CONSIDERED IN DETAIL

3.2.1 Air Quality

The 10.32-acre Golden Pass Townsite is located within the Fort Sill Military Reservation and falls within the Southwestern Oklahoma Intrastate Air Quality Control Region (AQCR). The Southwestern Oklahoma Intrastate AQCR is the designated region of influence (ROI) for air quality. Any proposed actions involving this site must consider potential effects on air quality within the ROI, ensuring compliance with applicable environmental regulations and standards. This section provides a definition of the resource, a description of the affected environment, and a

discussion of the environmental effects on air quality for the proposed action and the no action alternative.

3.2.1.1 Definition of Resource

Air quality is defined by the level of overall air pollution. As a resource it includes air pollution within a region, sources of air emissions, and regulations governing air emissions. Air pollution is the presence of one or more contaminants (e.g., dust, fumes, gas, mist, odor, smoke, or vapor) in the outdoor atmosphere in quantities and duration that could harm human, plant, or animal life, or unreasonably interfere with the enjoyment of life and property. Effects on air quality are evaluated with respect to relevant regulations enforced by AQCRs.

3.2.1.2 Affected Environment

Air quality in Oklahoma is regulated by the U.S. Environmental Protection Agency (USEPA) Region 6 and Oklahoma Department of Environment Quality (ODEQ). Primary and secondary National Ambient Air Quality Standards (NAAQS) (40 CFR Part 50) are established by the USEPA in compliance with the CAA (42 U.S.C. 7401-7671q), as amended. Short-term NAAQS (1-, 8-, and 24-hour periods) have been established for pollutants contributing to acute health effects, while long-term NAAQS (annual averages) have been established for pollutants contributing to chronic health effects. **Table 3-1** outlines the NAAQS for each of six criteria pollutants: particulate matter (measured as both particulate matter less than 10 microns in diameter [PM₁₀] and particulate matter less than 2.5 microns in diameter [PM_{2.5}]), sulfur dioxide (SO₂), carbon monoxide (CO), nitrogen dioxide (NO₂), ozone (O₃), and lead (Pb).

Oklahoma air quality standards are similar to NAAQS with differences in particulate matter and SO₂. DEQ allows a higher annual PM_{2.5} limit (15.0 µg/m³), allowing for a greater long-term fine particulate exposure compared to the NAAQS. In contrast, DEQ has a stricter secondary annual SO₂ standard of 0.02 parts per million (ppm) compared to the 0.5 ppm NAAQS limit (Oklahoma CAA 27A O.S. §§ 2-1-101 et seq.).

The General Conformity Rule mandates that a federal agency cannot take any action in a nonattainment area that interferes with a state's ability to maintain the NAAQS. The requirements of the General Conformity Rule do not apply because Comanche County, Oklahoma is designated as an attainment area for all six NAAQS criteria pollutants (USEPA 2025a). Comanche County is included in the Southwestern Oklahoma Intrastate AQCR (40 CFR § 81.125).

Table 3-1. National Ambient Air Quality Standards

Pollutant		Primary/ Secondary	Averaging Time	Level	Form
CO		Primary	8 hours	9 ppm	Not to be exceeded more than once a year.
			1 hour	35 ppm	
Pb		Primary and secondary	Rolling 3-month average	0.15 µg/m ³	Not to be exceeded.
NO ₂		Primary	1 hour	100 ppb	98th percentile of 1-hour daily maximum concentrations, averaged over 3 years.
		Primary and secondary	Annual	53 ppb	Annual mean.
O ₃		Primary and secondary	8 hours	0.070 ppm	Annual fourth highest daily maximum 8-hour concentration, averaged over 3 years.
Particulate matter	PM _{2.5}	Primary	Annual	12 µg/m ³	Annual mean, averaged over 3 years.
		Secondary	Annual	15 µg/m ³	Annual mean, averaged over 3 years.
		Primary and secondary	24 hours	35 µg/m ³	98th percentile, averaged over 3 years.
	PM ₁₀	Primary and secondary	24 hours	150 µg/m ³	Not to be exceeded more than once per year on average over 3 years.
SO ₂		Primary	1 hour	75 ppb	99th percentile of 1-hour daily maximum concentrations, averaged over 3 years.
		Secondary	Annual	10 ppb	Annual mean, averaged over 3 years

Source: USEPA 2025b.

Notes: CO = carbon monoxide; µg/m³ = micrograms per cubic meter; NO₂ = nitrogen dioxide; O₃ = ozone; Pb = lead; PM₁₀ = particulate matter with diameter less than or equal to 10 microns; PM_{2.5} = particulate matter with diameter less than or equal to 2.5 microns; ppb = parts per billion; ppm = parts per million; SO₂ = sulfur dioxide.

Meteorological factors influence air quality by affecting pollutant dispersion. High temperatures increase ground-level O₃ influencing wind and precipitation. The average climate at Fort Sill ranges from a low of 27.1 degrees Fahrenheit (°F) in January to a high of 95°F in July, with annual precipitation averaging around 33 inches (Milbases 2025). Severe types of weather that has the potential to cause destructive effects on the ground include thunderstorms, tornados, and hail. The National Weather Service (NWS) issues a Red Flag Warning when a combination of warm temperatures, low relative humidity, and strong winds occur. These conditions are fire weather conditions (NWS 2022). The occurrence of severe weather and red flag warnings varies annually.

3.2.1.3 Environmental Consequences

Evaluation Criteria

Significance of air quality emissions is dependent on several factors including if an action (1) exceeds established significance indicators, or (2) contributes to a violation of any federal, state, or local air regulation. Significance indicators serve as a benchmark to assess potential environmental effects and regulatory compliance. Emissions produced from an action would be compared against NAAQS.

The significance indicators for EPA air quality standards primarily revolve around criteria air pollutants and how their concentrations are measured and communicated to the public, especially through the Air Quality Index. The six criteria air pollutants are CO, ground-level O₃, Pb, NO₂, particulate matter, and SO₂, which are regulated due to their potential harm to human health and the environment.

Proposed Action

No change in regional air quality is anticipated as a result of the proposed action's approval because the jurisdictional transfer from BLM to Fort Sill will neither change existing conditions nor create new emissions. Regional air pollutant concentrations are not expected to be significantly affected within the analysis area as a result of the transfer of jurisdiction from BLM to Fort Sill.

No Action Alternative

Under the no action alternative, Fort Sill would no longer utilize the 10.32 acres; however, use of the larger area around the four BLM-managed blocks would continue to generate criteria pollutants. BLM anticipates management of the 10.32 acres as open land; therefore, no additional criteria pollutants would be generated.

General Conformity

Criteria pollutants are not expected to exceed the General Conformity Rule under either the proposed action or the no action alternative.

3.2.2 Biological Resources

This section provides a definition of the resource, a description of the affected environment, and a discussion of the environmental effects on biological resources for the proposed action and the no action alternative.

3.2.2.1 Definition of Resource

Biological resources include sensitive and protected plant and animal species and the habitats in which they occur. These include vegetation, wildlife, aquatic species, and threatened, endangered,

or candidate species listed under the ESA, as well as species of concern identified by the U.S. Fish and Wildlife Service (USFWS) and the Oklahoma Department of Wildlife Conservation (ODWC). Potential impacts on biological resources are evaluated based on species presence, habitat suitability, legal status, and expected effects of the proposed action or alternatives.

The ESA (16 U.S.C. § 1531 et seq.), as amended, provides for the conservation and protection of federally listed endangered and threatened species and their habitats. An “endangered” species is one that is in danger of extinction throughout all or a significant portion of its range, while a “threatened” species is one likely to become endangered in the foreseeable future. Federal agencies are required to evaluate the potential effects of their actions on listed species and any designated critical habitat as part of their environmental planning process. If a proposed action is expected to affect a listed species or habitat, the agency must assess the nature and significance of those effects and coordinate with the USFWS, as appropriate. The presence of federally listed species or suitable habitat is typically determined through database reviews and habitat assessments conducted during environmental review under NEPA. However, transfer of jurisdiction over the 10.32 acres from one federal agency to another would not result in any effects to the listed species or critical habitat.

The MBTA (16 U.S.C. §§ 703–712) makes it unlawful to take, possess, import, export, transport, sell, purchase, barter, or offer for sale any migratory bird, or the nests or eggs of such birds, except under the terms of a valid federal permit. “Take” is broadly defined to include pursuing, hunting, shooting, wounding, killing, trapping, capturing, or collecting. The USFWS maintains a list of Birds of Conservation Concern (BCC), which includes species likely to become candidates for ESA listing without additional conservation efforts. The 1988 amendment to the Fish and Wildlife Conservation Act requires USFWS to identify these species (USFWS 2015).

In 2001, EO 13186, *Responsibilities of Federal Agencies to Protect Migratory Birds*, directed federal agencies to promote the conservation of migratory bird populations, including entering into Memoranda of Understanding (MOUs) with USFWS. In 2014, the U.S. DoD signed such an MOU with USFWS to support mission readiness while conserving bird populations (USFWS 2014). In 2021, the USFWS published a final rule (86 FR 1134) revoking a prior 2020 regulation that had limited the MBTA’s scope to intentional take only (USFWS 2021). As of March 2021, the MBTA once again covers incidental take, defined as unintentional harm to migratory birds resulting from otherwise lawful activities, thereby restoring historical protections.

The Bald and Golden Eagle Protection Act (16 U.S.C. 668-668c) prohibits anyone, without a federal permit, from taking bald or golden eagles, their parts, nests, or eggs. “Take” is defined as to pursue, shoot, shoot at, poison, wound, kill, capture, trap, collect, molest, or disturb.

In Oklahoma, Title 29 Game and Fish §5-412, prohibits the unpermitted take, harassment, or killing of state-listed threatened and endangered wildlife. The ODWC maintains a list of protected species. Additional species data for the project area were reviewed using the USFWS Information

for Planning and Consultation (IPaC) database and the Oklahoma Natural Heritage Inventory (ONHI) and the Oklahoma Biodiversity Information System (OBIS).

3.2.2.2 Affected Environment

The Golden Pass Townsite consists of 10.32 acres located on the southern flank of the Wichita Mountains, within a previously disturbed training corridor in the Fort Sill Military Reservation. The area contains shallow, cobbly soils over granite bedrock and supports sparse vegetation due to topography, limited soil development, and historical vehicle use.

Vegetation within the site includes patches of post oak (*Quercus stellata*), blackjack oak (*Quercus marilandica*), little bluestem (*Schizachyrium scoparium*), threeawn (*Aristida spp.*), side-oats grama (*Bouteloua curtipendula*), and sand dropseed (*Sporobolus cryptandrus*), interspersed with exposed granite and lichens. Vegetation is most prominent along low-slope areas and base drainage lines.

Results from a review of the USFWS IPaC database included the monarch butterfly (*Danaus plexippus*), a proposed federally threatened species, and the piping plover (*Charadrius melodus*), and rufa red knot (*Calidris canutus rufa*), which are both federally threatened species. No critical habitat intersects the Golden Pass Townsite. Two federally listed species were identified as potentially occurring within Comanche County: the tricolored bat (*Perimyotis subflavus*, proposed endangered) and the monarch butterfly (*Danaus plexippus*, proposed federally threatened species). Additionally, several migratory birds protected under the MBTA are known to breed, forage, or migrate through the Fort Sill region. These include the scissor-tailed flycatcher (*Tyrannus forficatus*), Bell's vireo (*Vireo bellii*), and painted bunting (*Passerina ciris*), among others.

An OBIS database search of Comanche County found the bald eagle (*Haliaeetus leucocephalus*), and the endangered whooping crane (*Grus americana*). Also included was one proposed endangered mammal: the tricolored bat (*Perimyotis subflavus*) (OBIS 2025).

A general field survey conducted by QRI biologists (QRI-Tetra Tech 2024) found no roosting habitat or suitable cave/crevice structures within the site for tricolored bats, and no milkweed or sustained nectar sources to support monarch breeding activity. Vegetation and substrate conditions suggest that the site does not support critical foraging or nesting habitat for any federally listed species.

No bald or golden eagle nests, roosts, or sightings were recorded in the vicinity during field surveys, and the project area lacks large trees or open water features typically associated with eagle activity. No state-listed species were observed, and no unique ecological communities are present.

Vegetation

The primary vegetation type in the project area is central mixed-grass prairie. No wetlands are mapped within the 10.32-acre Golden Pass Townsite according to the National Wetlands

Inventory. Field surveys conducted in 2024 recorded grassland as the dominant vegetation type, with some variation among Blocks 15, 34, 35, and 36 as described below.

- **Block 15** had dense grass cover (2 to 4 feet) and the highest number of mature honey mesquite (*Prosopis glandulosa*) trees; however, these trees were below the densities suitable for tricolored bat roosting.
- **Block 34** had sparse vegetation in the north with exposed soil and gravel, while the south supported denser grasses. Green antelope horn milkweed (*Asclepias viridis*) and nectar plants were rare.
- **Block 35** featured a relatively flat center, with downward slopes toward a creek to the north and Ketch Lake to the south with sparse grassland vegetation. Some standing water and soil depressions were found.
- **Block 36** had steep slopes on the eastern portion. Most of the block had visible soil surface, gravelly soils, and sparse grassland vegetation.

Dominant plant species across all blocks included the following:

- **Grasses:** little bluestem (*Schizachyrium scoparium*).
- **Herbs:** green antelope horn milkweed (*Asclepias viridis*), whitemouth dayflower (*Commelina erecta*), meadow pink (*Sabatia campestris*), Texas paintbrush (*Castilleja indivisa*), wavyleaf thistle (*Cirsium undulatum*), lace hedgehog cactus (*Echinocereus reichenbachii*).
- **Woody vegetation:** Chickasaw plum (*Prunus angustifolia*), honey mesquite, and silverleaf nightshade (*Solanum elaeagnifolium*).

No invasive plant species (i.e., non-native plants) were observed in significant abundance.

Wildlife

Observed wildlife species included the following:

- **Mammals:** white-tailed deer (*Odocoileus virginianus*) and elk (*Cervus canadensis*).
- **Invertebrates:** bird grasshoppers (*Schistocerca* spp.), dragonflies (*Anisoptera*), butterflies (*Papilionoidea*), and other pollinators.

The site provides limited breeding or roosting habitat for special-status wildlife species/MTBA birds due to open exposure, sparse tree cover, and low floral diversity. However, it may serve as transient foraging habitat for some bird species during migration.

Protected Species

The USFWS IPaC database [<https://ipac.ecosphere.fws.gov> (accessed April 2025)] and the OBIS database identified several species with the potential to occur within Comanche County. Biological

and habitat assessments (QRI-Tetra Tech 2024) were used to determine the likelihood of species presence. A list of species that could occur based on the results of the IPaC and OBIS database searches and field surveys performed is provided in **Table 3-2**.

Table 3-2. Threatened, Endangered, Candidate/Proposed Species with Potential to Occur

Common Name Scientific Name	Status	Potential to Occur within Golden Pass Townsite	Rationale / Habitat Description
Mammals			
tricolored bat <i>Perimyotis subflavus</i>	Proposed Endangered	Yes (Foraging Only)	Roosts in foliage or caves; area lacks dense canopy or roosting structures.
Birds			
piping plover <i>Charadrius melodus</i>	Threatened / Endangered (Region – specific)	No	No sandy or tidal habitat; does not breed inland in Comanche County.
rufa red knot <i>Calidris canutus rufa</i>	Threatened	No	Migrates along coasts; unsuitable habitat inland.
whooping crane <i>Grus americana</i>	Endangered	No	Rare migrant; area lacks wetland and shallow open water.
Insects			
monarch butterfly <i>Danaus plexippus</i>	Proposed Threatened	Yes	Milkweed is the host plant; some was found; area lacks breeding habitat, but migratory use is likely.

Source: IPaC, OBIS.

Tricolored Bat (*Perimyotis subflavus*)

The tricolored bat roosts in foliage or crevices during warmer months and hibernates in caves or culverts during winter. This species is highly vulnerable to white-nose syndrome, which has caused mortality rates exceeding 90% in affected colonies.

On September 13, 2022, USFWS proposed listing this species as endangered under the ESA. While the tricolored bat may forage over the Golden Pass Townsite due to insect abundance, the site lacks dense forest canopy, caves, or other roosting structures. Field investigations and surveys conducted by the ODWC, the University of Oklahoma, and along West Cache Creek have not documented any tricolored bats on-site or within surrounding areas.

The Golden Pass Townsite is not a suitable roosting habitat, but the species may transiently forage on-site. The jurisdictional transfer of the 10.32 acres will have no effect on the tricolored bat.

Monarch Butterfly (*Danaus plexippus*)

On December 12, 2024, USFWS proposed listing the monarch butterfly as threatened under the ESA. Monarch butterflies migrate through Oklahoma twice annually, northward (March to July) and southward (September to October). Monarch reproduction depends on milkweed for larval development and native nectar plants for adult foraging.

At the Golden Pass Townsite, milkweed and nectar sources comprise less than 10% of total vegetation cover, and no monarch breeding or roosting has been observed. The site may provide limited transient foraging habitat during migration, particularly in areas with native herbs such as green antelope horn milkweed, gayfeather (*Liatris* spp.), and goldenrod (*Solidago* spp.).

The monarch butterfly may pass through the Golden Pass Townsite during migration, but the site does not support critical breeding, roosting, or overwintering functions. Therefore, the proposed action will have no effect on this species.

Migratory Birds

An IPaC search listed nine avian species currently protected under the MBTA (50 CFR 10.13) and two BCC vulnerable species under the Bald and Golden Eagle Protection Act which have the potential of entering within 10 km of the site. As it relates to the DoD, the incidental take of migratory birds during military readiness activities was deemed consistent with the MBTA and the treaties in the 2003 National Defense Authorization Act. However, if any of the Armed Forces determine that proposed or ongoing military readiness activities may result in a significant adverse effect on the population of a migratory bird species, they must then confer and cooperate with the USFWS to develop appropriate and reasonable conservation measures to minimize or mitigate identified significant adverse effects (50 CFR Part 21). Below, in **Table 3-3**, the avian species and their respective classifications as BCC are listed in conjunction with breeding timeframes which could intersect the Golden Pass Townsite. Local sightings which intersect the breeding seasons are marked by bold text. These designated periods are estimated through sightings of this migratory bird within a radius of 10 km around the 10.32-acre plot. Due to the scarcity and type of trees, most of these species are unlikely to breed or nest on the actual site. Although they do nest on raised grasslands or sage brush near water, the willet's propensity to water may bring them closer to the edge of Blue Beaver Creek or Ketch Lake where they would build their nests in the ground hidden by short vegetation along the water's edge.

Table 3-3. Migratory Birds

Common Name <i>Scientific Name</i>	Protective Act and BCC Status	Sightings within 10km	Breeding Season	Breeds at site
Bald Eagle <i>Haliaeetus leucocephalus</i>	MTBA The Bald and Golden Eagle Protection Act Non-BCC Vulnerable	Jan 25-31	Oct 15 –Jul 31	Unlikely due to preferred habitat elsewhere
Golden Eagle <i>Aquila chrysaetos</i>	MTBA The Bald and Golden Eagle Protection Act Non-BCC Vulnerable	Nov 7-14	Jan 1 –Aug 31	Unlikely due to preferred habitat elsewhere
Black-capped Vireo <i>Vireo atricapilla</i>	MBTA BCC Rangewide Continental U.S. (CON) (Removed from the federal endangered species list in 2018: IUCN Near Threatened)	Apr 14-Jun 30 July 7-Aug 7 Sep 1-7	Apr 1 – Sep 15	Unlikely due to preferred habitat elsewhere
Chestnut-collared Longspur <i>Calcarius ornatus</i>	MBTA BCC Rangewide D Yellow watchlist	Nov 1-7 Nov 24-30 Dec 1-7 Dec 16- Feb 28 Mar 7-14	Breeds elsewhere	No
Chimney Swift <i>Chaetura pelagica</i>	MBTA BCC Rangewide (CON)	May 25-Jun 14 July 14-21	Mar 15 – Aug 25	Unlikely due to preferred habitat elsewhere
Lark Bunting <i>Calamospiza melanocorys</i>	MBTA BCC - BCR	Mar 7-14	May 10 – Aug	No
Lesser Yellowlegs <i>Tringa flavipes</i>	MBTA BCC Rangewide (CON)	Apr 14-30	Breeds elsewhere	No
Pectoral Sandpiper <i>Calidris melanotos</i>	MBTA BCC Rangewide (CON)	Apr 24-30 May 14-21	Breeds elsewhere	No
Red-headed Woodpecker <i>Melanerpes erythrocephalus</i>	MBTA BCC Rangewide (CON)	Jan 1-7 Jan 21-31 Feb 21-28 Apr 1-7 May 1-7 Jun 7-14 Oct 1-7	May 10 – Sep 10	Unlikely due to preferred habitat elsewhere

Common Name <i>Scientific Name</i>	Protective Act and BCC Status	Sightings within 10km	Breeding Season	Breeds at site
		Oct 21-Nov 7 Dec 21-31		
Sprague's Pipit <i>Anthus spragueii</i>	MBTA BCC Rangewide (CON)	Nov 21-30	Breeds elsewhere	No
Willet <i>Tringa semipalmata</i>	MBTA BCC Rangewide (CON)	Apr 21-30	Apr 20 – Aug 5	Unlikely due to preferred habitat elsewhere

Source: IPaC

3.2.2.3 Environmental Consequences

Evaluation Criteria

Effects on biological resources would be considered significant if the proposed action:

1. Adversely affects species or habitats of concern over a broad area, or
2. Results in a measurable reduction in population size, reproductive success, or distribution that may jeopardize the continued existence of a species.

Proposed Action

The proposed withdrawal of the 10.32-acre Golden Pass Townsite to transfer jurisdiction from BLM to Fort Sill for a 20-year period would not result in significant impacts to vegetation or wildlife. The withdrawal would not alter the environmental baseline or change existing training activity levels. Neither evaluation criteria would be met due to the small training footprint, lack of critical habitat, and low intensity of use.

The proposed action will have no effect on the tricolored bat and monarch butterfly. No long-term reduction in habitat function or population size, reproductive success, or distribution of a species is expected. Therefore, as noted previously, no ESA Section 7 consultation was deemed necessary.

No Action Alternative

Under the no action alternative, the land would not be withdrawn. Biological resources on the 10.32 acres would be managed by the BLM in accordance with BLM management goals and objectives, subject to appropriate environmental analysis by BLM.

3.2.3 Cultural Resources

This section provides a definition of the resource, a description of the affected environment, and a discussion of the environmental effects on cultural resources for the proposed action and the no action alternative. Fort Sill, with the concurrence of BLM, has determined that the transfer of

jurisdiction over land from one federal agency to another is not an undertaking of the type with the potential to cause effects to historic properties, should any be present; therefore, under the regulations implementing Section 106 of the NHPA at 36 CFR 800.3(a)(1), the agency official has no further obligations under Section 106 or these regulations.

3.2.3.1 Definition of Resource

Cultural resources are the heritage of the natural and built human environment. Cultural resources include prehistoric and historic districts, sites, buildings, structures, and objects. Fort Sill identifies cultural resources as historic properties as defined in 36 CFR 800.16(1) pursuant to the NHPA; archaeological resources as defined in the Archaeological Resources Protection Act (16 U.S.C §§ 470aa–470mm) and the Archeological and Historic Preservation Act (54 U.S.C. §§ 312501–312508); archaeological artifact collections and associated records (36 CFR 79); traditional cultural places (TCPs) and/or sacred sites as defined in EO 13007 and the American Indian Religious Freedom Act (42 U.S.C. 1996; 42 U.S.C. 1996a); and all remains, objects, and cultural items protected by the NAGPRA (43 CFR 10). It is also noted that cultural resources do not have any definitive legal definition. Archaeological resources comprise artifacts, features, and other archaeological indications of past human life or activities from which archaeologists interpret information about history or prehistory. TCPs are resources of traditional, religious, or cultural significance and may include traditionally used plants and animals, trails, and certain geographic areas.

The NHPA establishes a legal framework for protecting historic properties of national, state, and local importance (54 U.S.C. 300101 et seq.). The NHPA of 1966 authorized the creation of the NRHP (36 CFR 60)]; which is a living record of historic properties. Section 106 of the NHPA requires the consideration of impact of a federal agency’s actions on historic properties; and Section 110 of the NHPA indicates the identification, evaluation and management responsibilities a federal agency has for historic properties. The agency must consider the effects of the project on any historic properties within the area of potential effect (APE). The APE is “the geographic area or areas within which an undertaking may directly or indirectly cause alterations in the character or use of historic properties, if any such properties exist” (36 CFR 800.16(d)). An adverse effect is defined as an impact of an undertaking that may “alter, directly or indirectly, any of the characteristics of a historic property that qualify the property for inclusion in the National Register” (36 CFR 800.5(a)(1)). Consultation under Section 106 is triggered when a federal undertaking that has the potential to affect historic properties is proposed. Once an undertaking is proposed, the federal agency must initiate consultation with the SHPO, federally recognized tribes, and the public and other parties as appropriate. If adverse effects are identified, avoidance, minimization, or mitigation strategies are developed to address the negative impact to historic properties. These effects may include both direct impacts and indirect impacts on historic properties.

Cultural resource management is important for Fort Sill, and archaeological sites and historic structures (45 years or older) are continuously evaluated for NRHP eligibility within the boundaries of the installation. All resources are identified and managed under the Integrated Cultural Resources Management Plan (ICRMP) (Fort Sill 2013), which is informed by AR 200-1, *Environmental Protection and Enhancement* (U.S. Army 2007). These documents provide processes and procedures for compliance with Sections 106 and 110 of the NHPA.

3.2.3.2 Affected Environment

The ICRMP places cultural resources at Fort Sill into one of three categories:

- Category 1: Archaeological sites;
- Category 2: Historic architectural resources;
- Category 3: NAGPRA-related remains, objects, and items.

Sacred sites and TCPs are not identified as separate categories, as these resources generally occur within categories 1 or 2. For the proposed undertaking, the APE includes four separate parcels composing 10.32 acres. These parcels were originally associated with the historic Golden Pass Townsite, which was established at the beginning of the twentieth century. The 10.32 acres were reserved for school and park purposes in the 1906 Townsite plat, and a 1941 EO withdrew the land from the public domain for military purposes. Since 1941, Fort Sill has used the 10.32 acres for various training activities on its west range. A more detailed history of Golden Pass Townsite is included in the Cultural Resources Assessment Survey Report (QRI-Tetra Tech JV 2025). The following sections assess the cultural resources within the affected environment and environmental consequences, specifically related to cultural resources.

Archaeological Resources

A search of the Fort Sill 2024 Geographic Information System database prior to archaeological fieldwork identified no category 1 (i.e., archaeological) resources within the boundaries of the APE. In 2024, a Secretary of the Interior-qualified archaeologist conducted a project-specific, pedestrian field survey of the APE in relation to the proposed action. No archaeological material or NAGPRA-related remains, objects, or items (categories 1 or 3) were found during this survey (QRI-Tetra Tech JV 2025).

Architectural Resources

As affirmed during the cultural survey, there are no category 2 (i.e., historic architectural) resources within the APE (QRI-Tetra Tech JV 2025).

3.2.3.3 Environmental Consequences

Evaluation Criteria

The analysis of potential adverse effects considers impacts on cultural resources. Impacts may result in physical alteration, damage, or destruction of all, or part, of a resource. Impacts can also occur from alterations to characteristics of the surrounding environment that contribute to the importance of the resource; introducing visual, atmospheric, or audible elements that are out of character with the property or that alter its setting or feeling. In addition, impacts may refer to long-term effects, such as weathering or erosion of a resource. Effects on cultural resources would be considered significant if the proposed action caused adverse effects, as defined in 36 CFR 800, to NRHP-eligible (categories 1 and 2) resources.

Proposed Action

There are no identified cultural resources within the APE. In addition, the four blocks composing the 10.32 acres are indistinguishable from the surrounding lands with no physical evidence of the previous town's development. Therefore, the proposed withdrawal of the Golden Pass Townsite has no potential to impact cultural resources.

No Action Alternative

No effects are expected to cultural resources from the no action alternative because there are no identified cultural resources within the APE. The proposed withdrawal of the Golden Pass Townsite would not occur. The BLM anticipates management of the 10.32 acres as open land; therefore, no impacts to cultural resources are anticipated.

3.2.4 Geological and Soil Resources

This section provides a definition of the resource, a description of the affected environment, and a discussion of the environmental effects on geology and soils for the proposed action and the no action alternative.

3.2.4.1 Definition of Resource

Geological resources consist of the Earth's surface and subsurface constituents. These constituents typically are described in terms of topography, geology, soils, and geologic hazards. Topography pertains to the general shape and arrangement of a land surface, including its height and the position of its natural and artificial physical features. Geology deals with the Earth's physical structure, composition, history, and the natural physical processes that act on it. Such information derives from field analysis based on observations of the surface and subsurface identification of composition and physical characteristics.

Soils include the unconsolidated upper layer of the organic remains of clay and rock overlying bedrock. Soils typically are described in terms of their complex type, slope, and physical characteristics. Differences among soil types in terms of their structure, elasticity, strength, shrink-swell potential, and erosion potential affect their abilities to support certain applications or uses. In appropriate cases, soil properties must be examined for their compatibility with construction

activities or types of land use. Prime farmland is defined as land that has the best combination of soil characteristics for producing crops.

3.2.4.2 Affected Environment

Topography

The Golden Pass Townsite is located within the Fort Sill Military Reservation in Comanche County, Oklahoma, within the Granite Mountains Region, which is a geomorphic province of uplifted Cambrian granite and related igneous rocks that form part of the Wichita Mountains (Johnson and Luza 2008).

This region is characterized by rugged terrain, with prominent rocky outcrops and steep slopes rising above the surrounding plains. Elevation at the Golden Pass Townsite ranges from approximately 1,550 to 1,575 feet above mean sea level, based on U.S. Geological Survey (USGS) topographic mapping (USGS 1949; USGS 2016; USGS 2022) (**Figure 3-1**).

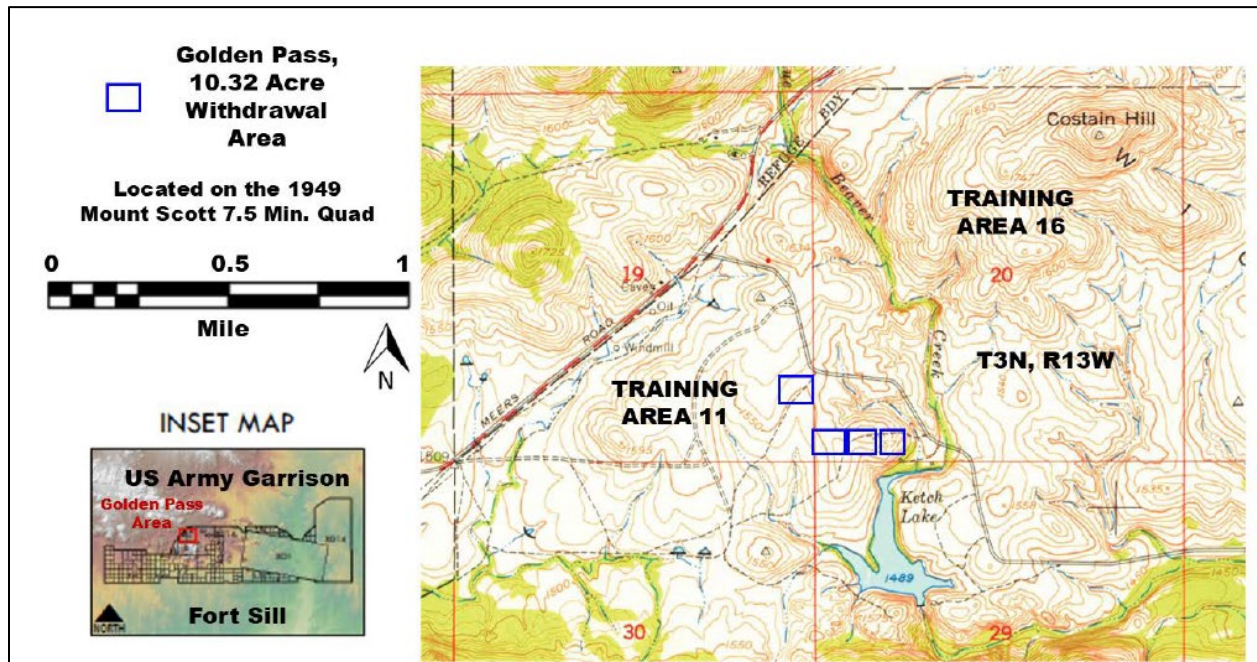


Figure 3-1. Topographic Map of the Golden Pass Withdrawal Request Area (Blue Rectangles), Which is Located in Training Area 11 of U.S. Army Garrison, Fort Sill, OK

The 10.32-acre project site lies along a series of bedrock-controlled uplands and shallow drainages. Surface features reflect both natural geomorphic processes and past military modifications, including road development and localized grading. Slope gradients across the site range from 3 to over 15%, placing the majority of the terrain within the National Resources Conservation Service (NRCS)-defined gently sloping (3–8%) and moderately sloping (8–15%) categories, with steeper areas exceeding 15% observed in the northern parcel (Section 19). These steeper slopes contribute

to concentrated surface runoff and localized erosion, particularly near incised channels and exposed granite faces.

Surface water generally flows southward toward Ketch Lake and ephemeral tributaries of Little Medicine Creek. Due to the presence of shallow soils, exposed bedrock, and limited infiltration capacity, stormwater runoff dominates the site's hydrology. **Figure 3-1** illustrates detailed elevation contours and slope variability across the Golden Pass Townsite.

Geological Resources

The Golden Pass Townsite is located within the Granite Mountains Region, a physiographic sub province of the Wichita Uplift, where ancient igneous and carbonate rocks are exposed due to repeated tectonic uplift (Ham 1969; Johnson and Luza 2008).

The Golden Pass Townsite lies on the southern flank of the Wichita Uplift, bounded by the Anadarko Basin to the north and the Hollis Basin to the south. The site is underlain by the Permian Post Oak Formation, a weathered carbonate unit, and is surrounded by Cambrian-age granitic intrusions including the Quannah Granite, Rush Lake Granite, Mount Scott Granite, Carlton Rhyolite, and Glen Mountains Layered Complex. No Quaternary faults are mapped at the site, and the nearest significant structure—the Meers Fault Zone—is located over 12 miles to the north. The site's geologic setting reflects its position along a structural transition zone where uplifted igneous basement meets the overlying Permian strata. Although the site lies within the historic Wichita Mining District, it does not host any known active or past-producing mines (The Hudson Institute of Mineralogy n.d.). The nearest historical mining features—Parker Lead Prospect, Cross Mountain Zinc Mine, and Pearson Copper Prospect—are located 1.0 to 2.2 miles south of the site and have been inactive since before 1915 (Merritt 1940a; Fay and Brockie 2002; Johnson and Luza 1986). These prospects targeted narrow quartz veins within granite but yielded no commercially viable production.

Given the site's rugged terrain, competent igneous bedrock, and absence of known hazards or structural deformation, the Golden Pass Townsite is considered geologically stable and presents no constraints to continued military use. There is no potential for commercial mineral development and no active claims or leases exist within or adjacent to the 10.32 acre site.

Soil Resources

The Golden Pass Townsite is underlain by shallow, well-drained soils formed in clayey colluvium and granitic residuum weathered from Cambrian igneous bedrock. These soils occur on mountain and foot slopes and are mapped by NRCS as the Brico–Rock Outcrop complex and the Rock Outcrop–Brico complex, reflecting the site's rugged topography and underlying granite (NRCS USDA 2025).

- **Brico–Rock Outcrop Complex:** Occurs on 5–40% slopes and comprises approximately 33% of the site. It is a mix of Brico soils (~50%) and granitic rock outcrop (~45%). The soils are moderately deep, cobbly, and well-drained, with low water-holding capacity and extremely high runoff potential.
- **Rock Outcrop–Brico Complex:** Covers about 67% of the site on 3–20% slopes. Dominated by exposed granite (~70%) with shallow Brico inclusions. These soils offer minimal rooting depth and generate extremely high runoff during precipitation events.

Both units are poorly suited for cultivation due to slope, shallow depth, and low fertility. They fall within Hydrologic Soil Groups C and D, indicating slow infiltration and a tendency for rapid surface runoff. No alluvial, sandy-loam, or hydric soils are present within the project boundary. Surface conditions include frequent rock outcrops, thin colluvium, and disturbed soil areas from past military activity. Erosion is a moderate concern where slopes coincide with concentrated flow or disturbance. The parcels consist primarily of disturbed soils, grasslands, and areas with regular vehicular or troop activity, conditions that are generally unsuitable for the formation or persistence of biological soil crust. If present historically, any biocrust communities likely have been disrupted by long-term surface disturbance.

Geologic Hazards

The Golden Pass Townsite within the Fort Sill Military Reservation in Comanche County, Oklahoma is situated within the Granite Mountains Region, a distinct geomorphic province of the Wichita Mountains, characterized by rugged topography and steep-sided uplifts of Cambrian-age intrusive igneous rocks, primarily granites, rhyolites, and gabbro's. This area reflects a complex geologic history of uplift, faulting, and erosion associated with Proterozoic and early Paleozoic tectonics, followed by Pennsylvanian-age deformation tied to the Ancestral Rocky Mountains orogeny.

The primary Geologic Hazards are:

1. **Seismicity:** While Oklahoma has experienced increased seismicity related to anthropogenic activities in sedimentary basins, the Fort Sill area lies within a relatively stable crystalline terrain. However, basement fault systems such as the Meers Fault (northwest of Fort Sill) suggest the presence of reactivated structures (Cullen 2016). These faults, though currently showing minimal activity, remain potential sources of low-probability but moderate-magnitude intraplate earthquakes.
2. **Faulting and Fracturing:** The Wichita Uplift is defined by steeply dipping fault blocks, including thrust faults and high-angle normal faults developed during early Paleozoic tectonism (Harlton 1963). These structures may influence ground stability, especially for deep excavation, construction anchoring, or subsurface utilities. Existing fracture zones within the granite may concentrate stress or groundwater flow, impacting slope integrity.

- 3. Rockfall and Slope Instability:** The project area includes steep granite outcrops, boulder fields, and talus slopes with potential for rockfall hazards, particularly on or near road cuts or trails traversing the flanks of granite domes (Pérez-Ray 2019). Intense freeze-thaw cycles, common in Oklahoma winters, exacerbate joint expansion, and block detachment.
- 4. Expansive Soils and Residual Clays:** Soils derived from weathered granite and rhyolite may include kaolinitic and montmorillonitic clays, which exhibit moderate shrink-swell behavior (Oklahoma Department of Transportation 2021). These expansive soils can damage lightly engineered structures, roadbeds, or buried utilities if not properly mitigated.
- 5. Erosion and Surface Water Runoff:** The granite terrain generates high-energy runoff during rain events due to minimal infiltration and steep gradients. This can lead to localized gullying, flash flooding in intermontane valleys, and sediment transport (Gilbert 1982). Infrastructure must accommodate rapid overland flow and erosion control.
- 6. Radon and Naturally Occurring Radioactive Materials (NORM):** Igneous rocks in the Granite Mountains have the potential to emit elevated radon gas levels due to uranium and thorium-bearing accessory minerals (e.g., zircon, monazite) (Flood 1990). Indoor air quality and subsurface worker exposure should be assessed where enclosed spaces or long-term habitation is planned.
- 7. Groundwater Variability:** The fractured granite aquifers exhibit extreme variability in water availability and quality (Havens 1983). Wells may encounter low yields, saline zones, or iron-rich fluids depending on fracture connectivity and lithologic controls. Brine contamination is not a primary concern here, but water resource development should be carefully planned.

3.2.4.3 Environmental Consequences

Evaluation Criteria

Effects on geology and soils would be considered significant if the proposed action changed the geology, topography, and soils that (1) adversely affect current land uses, or (2) causes loss of unique and sensitive soils or geologic features.

Proposed Action

No significant impacts on geology and soils would be expected from implementing the proposed action. The proposed action would not change current land uses or cause loss of unique and sensitive soils or geologic features. The 10.32 acres of land has been used by the Army for military training purposes for decades. Any soil degradation that could occur as a result of approval of the proposed action has already occurred in the past during previous withdrawal periods. Therefore, the level of effects will not be significant.

No Action Alternative

Under the no action alternative, the BLM would not transfer jurisdiction of the 10.32 acres to the Army. Military training and other operations would not occur in the 10.32 acres. Existing geologic features and soil profiles would not be disturbed and would remain unchanged, when compared to existing conditions. The BLM would continue managing the 10.32 acres as open land in accordance with the land use allocations and resource management goals and objectives identified in the approved 2020 RMP.

3.2.5 Land Use

This section provides a definition of the resource, a description of the affected environment, and a discussion of the environmental effects on land use for the proposed action and the no action alternative.

3.2.5.1 Definition of Resource

The term land use refers to the human use of land. A proposed action's land use is largely dictated by compliance or consistency with applicable land use or zoning regulations or guidelines. Descriptive terms for land use generally include commercial, industrial, military, residential, agricultural, institutional, transportation, communications, and utilities, and recreational. Natural land use categories include state and national forests, state and national parks, wilderness areas, and other similar areas. Human-modified land categories include recreation areas, agricultural areas, research areas, pipelines and powerlines, airports and private airstrips, and other areas developed from natural land cover conditions. Sensitive land use includes those uses intended to preserve natural or cultural resources, contain recreational opportunities and public access, or provide for the management of public lands.

3.2.5.2 Affected Environment

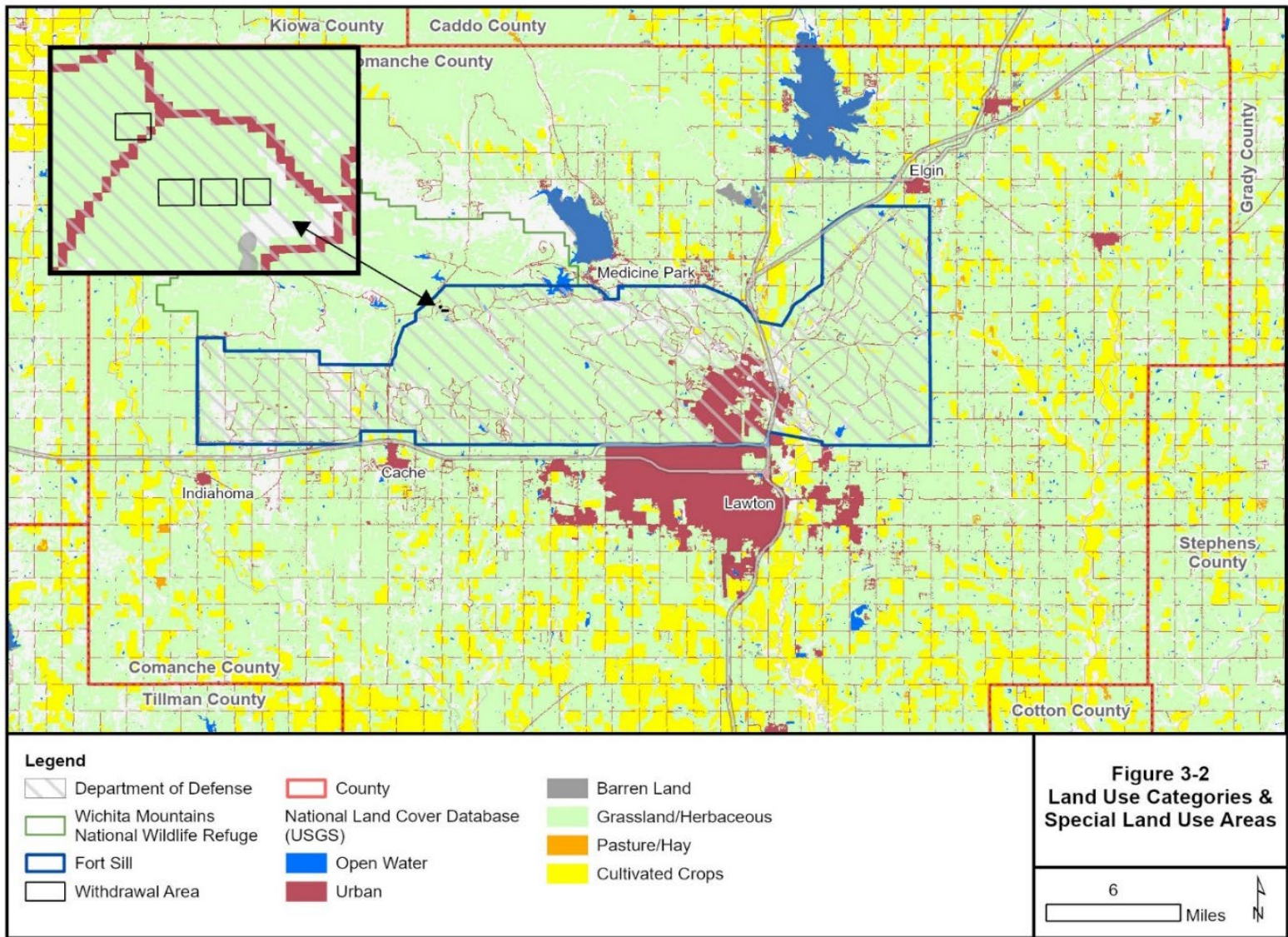
Fort Sill is surrounded by the cities of Lawton, Cache, and the town of Indianola to the south, the town of Medicine Park and city of Elgin to the north, and the WMWR to the northwest (**Figure 3-2**). The remaining land area encircling Fort Sill is made up of farmland, primarily used for growing wheat and grazing livestock. There is also oil field activity off the eastern boundary of the installation (Fort Sill 2020).

Fort Sill occupies approximately 93,000 acres in Comanche County, Oklahoma. Land use on Fort Sill is primarily designated for military training and operational purposes. Fort Sill is composed of a cantonment area, 44 ranges, 82 TAs, 28 training sites, two Drop Zones, and multiple helicopter landing zones (Fort Sill 2020). The subject 10.32 acres is comprised of four noncontiguous and undeveloped parcels located within TA 11. TA 11 is composed of about 1,054 acres of land, of which just over 962 acres are considered accessible land. TA 11 is typically used for light wheeled vehicle and dismounted troop maneuver training. The military training activities conducted at Fort

Sill are managed under the Army's Sustainable Range Program core programs (AR 350-19), the Range and Training Land Program, and the Integrated Training Area Management program.

Wilderness Act

The Golden Pass Townsite is not located within a roadless area or roadless island having wilderness characteristics, as described in the Wilderness Act of 1964 (16 U.S.C. 1131, et seq.).



**Figure 3-2
Land Use Categories &
Special Land Use Areas**

6 Miles

Figure 3-2. Land Use Categories & Special Land Use Areas

3.2.5.3 Environmental Consequences

Evaluation Criteria

Effects on land use would be considered significant if the proposed action would (1) change the suitability of a location for its current or planned use (e.g., noise exposure in residential areas); (2) cause conditions that are unsafe for range and TA usage and the public welfare; (3) conflict with the current and planned use of an area based on current zoning, amendments, agreements, regulatory restrictions, management, and land use plans; or (4) displace a current use with a use that does not meet the goals, objectives, and desired use of an area. The severity of land use effects (e.g., negligible, minor, moderate, or significant) is based on the level of land use sensitivity in areas affected by a proposed action, the magnitude of change, and the compatibility of a proposed action with existing or planned land uses.

Proposed Action

The proposed action is to withdraw the Golden Pass Townsite for 20 years, which would be consistent with land use from 1941 to 2022. Use of the land for military purposes would continue within the 10.32 acres. Therefore, land use at Fort Sill or in the vicinity would not change under the proposed action.

No Action Alternative

Under the no action alternative, the 10.32 acres would remain under BLM jurisdiction and subject to the management objectives of the BLM in accordance with the land use allocations and management goals and objectives identified in the 2020 RMP. Military training would cease on these lands, which would result in a change in land use. However, it is anticipated that this land would remain open space and be compatible with the surrounding military use.

3.2.6 Noise

The 10.32-acre Golden Pass Townsite is part of the Fort Sill Military Reservation and falls within an ROI zoned for large-caliber arms noise [U.S. Army Corps of Engineers (USACE) 2023]. This zoning indicates that the ROI is designated for military training purposes and experiences loud temporary sounds from the existing use of large-caliber weapons. This section provides a definition of the resource, a description of the affected environment, and a discussion of how noise will affect the environment for the proposed action and the no action alternative.

3.2.6.1 Definition of the Resource

Noise is defined as undesirable sound that interferes with communication, is intense enough to damage hearing, or is intrusive. Activities essential to a community's quality of life, such as construction or vehicular traffic, make noise. The type and characteristics, distance from source, sensitivity, and time of day influence human response to noise.

Sound varies by both intensity and frequency. Intensity is a sound pressure level quantified in decibels (dB). The human ear responds differently to different frequencies. “A-weighting,” measured in A-weighted decibels (dBA), approximates sound frequency. **Table 3-4** lists sounds encountered in daily life and their dBA levels.

Table 3-4. Typical Sound Levels of Common Outdoor Sources

Common Outdoor Sources	Sound Level (dBA)	Indoor
Jet flyover at 1,000 feet	100	Rock band
Gas lawnmower at 3 feet	90	Food blender at 3 feet
Downtown (large city)	80	Garbage disposal
Heavy traffic at 150 feet	70	Vacuum cleaner at 10 feet
Normal conversation	60	Normal speech at 3 feet
Quiet urban daytime	50	Dishwasher in next room
Quiet urban nighttime	40	Theater, large conference room

Most environments include near-constant, long-term sound sources that create a background sound level and intermittent, intrusive sources that create sound peaks that are noticeably higher than the background levels. In remote areas far away from any human activities, the background sound level is determined by natural sources such as water (e.g., rain) and wind blowing through the vegetation. The extent to which an intrusive sound affects a given receptor in the environment depends on the degree to which it exceeds the background sound level. Both background and intrusive sound may affect the quality of life in a given environment.

AR 200-1, *Environmental Protection and Enhancement*, Chapter 14 outlines the Army’s noise management policy (U.S. Army 2007). The policy includes developing installation noise management plans, reducing noise to acceptable levels in on-post noise sensitive areas through land use planning and engineering controls, and monitoring and addressing noise complaints. It also emphasizes designing and procuring quieter combat equipment.

AR 200-1 identifies residential areas, schools, and medical facilities as noise sensitive land uses and provides land use recommendations across the following four noise zones to guide development and reduce conflicts between Army training noise and public concerns.

- Land Use Planning Zone: Helps predict noise impacts from increased airfield operations or large-caliber weapon ranges. It supports community planning by offering additional information on potential noise exposure.
- Zone I: Generally compatible with most noise-sensitive uses, including residential areas, schools, and medical facilities.
- Zone II: Typically, incompatible with noise-sensitive uses where noise exposure would be considered significant. Only less sensitive uses (e.g., industrial) are recommended unless mitigation is applied.
- Zone III: Not suitable for noise-sensitive uses due to severe noise exposure. Such uses should be avoided in this zone.

3.2.6.2 Affected Environment

The Golden Pass Townsite is undeveloped and located in TA 11. It is designated for military training purposes (Zone II), and noise sensitive land use (Zone I; e.g., residential housing) is more than 5 miles to the south and east. The Golden Pass Townsite has been used by Fort Sill for military purposes since 1941. The Golden Pass Townsite and surrounding areas experience loud temporary sounds from the existing use of large-caliber weapons (62-70 dB C-weighted day-night level) during military training on Fort Sill (AR 200-1).

3.2.6.3 Environmental Consequences

Evaluation Criteria

Noise levels that persist at a level greater than a normal conversation may be considered significant. Noise in Zone I may be considered significant if impulsive noise exceeds 62 dBA because it leads to community annoyance and complaints. Noise in Zone II may be considered significant if impulsive noise exceeds 70 dBA. Impulsive noise in Zone III may exceed 70 dBA.

Proposed Action

No significant changes to current human-caused noise sources or sound levels associated with those sources are expected as a result of the proposed action. Noise from military training and other operations activities occurring immediately adjacent to the 10.32 acres are expected to have similar sound levels as those currently being realized on each of the four parcels. Implementation of the proposed action is anticipated to result in no significant increases in sound levels or expansions of the noise frequency spectrum. Therefore, no significant impacts to the natural environment would occur since any such effects have already been realized from past and current military training and other operations taking place in the immediate vicinity of the area.

No Action Alternative

Under the no action alternative, the BLM would continue managing the 10.32-acres as open land in accordance with the land use allocations and management goals and objectives identified in the 2020 RMP. However, noise generated from military training activities immediately adjacent to the Golden Pass Townsite would continue. Therefore, no overall change in effects on the natural environment attributable to human-caused noise sources would be expected.

3.2.7 Water Resources

The ROI for water resources consists of areas within and downstream or downgradient of the 10.32-acre Golden Pass Townsite and within 1-mile of the site. This section provides a definition of the resource, a description of the affected environment, and a discussion of the environmental effects on water resources for the proposed action and the no action alternative.

3.2.7.1 Definition of Resource

Water resources include surface water and groundwater quantity and quality, floodplains, and wetlands. This section provides descriptions of the qualitative and quantitative characteristics of water resources.

Surface Water. Surface water includes lakes, rivers, and streams and is important for a variety of reasons including irrigation, power generation, recreation, flood control, and human health. The nation's waters are protected under the statutes of the CWA; the goal of the CWA is to restore and maintain the chemical, physical, and biological integrity of the nation's water so that they can support "the protection and propagation of fish, shellfish, wildlife, and recreation in and on the water." Under the CWA Section 402, it is illegal to discharge any point and/or nonpoint pollution sources into any surface water without a National Pollutant Discharge Elimination System (NPDES) permit. The USEPA is charged with administering the NPDES permit program. In Oklahoma, the NPDES is administered by DEQ. At Fort Sill, the Fort Sill Stormwater Compliance program enforces regulatory standards for wastewater discharges, stormwater runoff, and sewage use and disposal practices. The Oklahoma Water Resources Board (OWRB), which serves as Oklahoma's water resources planning and development agency, was used for data and information on Oklahoma's surface water.

Also, under the requirements of Section 438 of the Energy Independence and Security Act (42 U.S.C. § 17094) federal facility projects larger than 500 square feet must "maintain and restore, to the maximum extent technically feasible, the predevelopment hydrology of the property with regard to the temperature, rate, volume, and duration of flow.

Groundwater. Groundwater is water that exists underground in saturated zones beneath the land surface. Groundwater is water that soaks into the soil from rain or other precipitation and is an essential resource often used for potable water consumption, agricultural irrigation, and industrial applications. Groundwater plays an important part in the overall hydrologic cycle and its properties are described in terms of depth to aquifer or water table, water quality, and surrounding geologic composition. The OWRB was used for data and information on Oklahoma's groundwater.

Floodplains. Floodplains are defined by the USGS as, "the flat or nearly flat land along a river or stream or in a tidal area that is covered by water during a flood." These areas must be reserved to discharge the 100-year flood without cumulatively increasing the water surface elevation more than a designated height. When a floodplain is established, no additional obstruction (e.g., a building) should be placed in the floodplain that will increase the 100-year floodwater surface elevation. EO 11988, Floodplain Management, requires all federal agencies to provide leadership and take action to reduce the risk of flood loss; to minimize the impacts of floods on human safety, health, and welfare; and to restore and preserve the natural and beneficial values served by floodplains, specifically the 100-year floodplain, in managing federal lands and conducting federal activities and programs affecting land use. The Federal Emergency Management Agency (FEMA)

provides current effective flood hazard data that is used to assess flood risks and to provide tools for floodplain management.

3.2.7.2 Affected Environment

Surface Water

There are no surface water resources located within the Golden Pass Townsite. One lake within Fort Sill, Ketch Lake, is approximately 300 feet south of the Golden Pass Townsite. One ephemeral/intermittent stream, Blue Beaver Creek, flows into Ketch Lake and extends north to south, approximately 600 feet east of the Golden Pass Townsite (**Figure 3-3**). Ouray and other unnamed water resources are also located outside but within 1-mile of the Golden Pass Townsite. The Golden Pass Townsite is within the Upper Blue Beaver Creek watershed.

Groundwater

There are no major aquifers or minor bedrock aquifers below the Golden Pass Townsite (OWRB 2025). The Golden Pass Townsite is within a groundwater basin, Basin 29 (West Cache Creek) of the Beaver-Cache Watershed Planning Region (OWRB 2012).

Floodplains

The 100-year floodplains on Fort Sill have been mapped for West Cache Creek and its major tributaries. No floodplain areas are present in the Golden Pass Townsite (FEMA 2025). A floodplain is present approximately 300 feet south of the Golden Pass Townsite within and surrounding Ketch Lake.

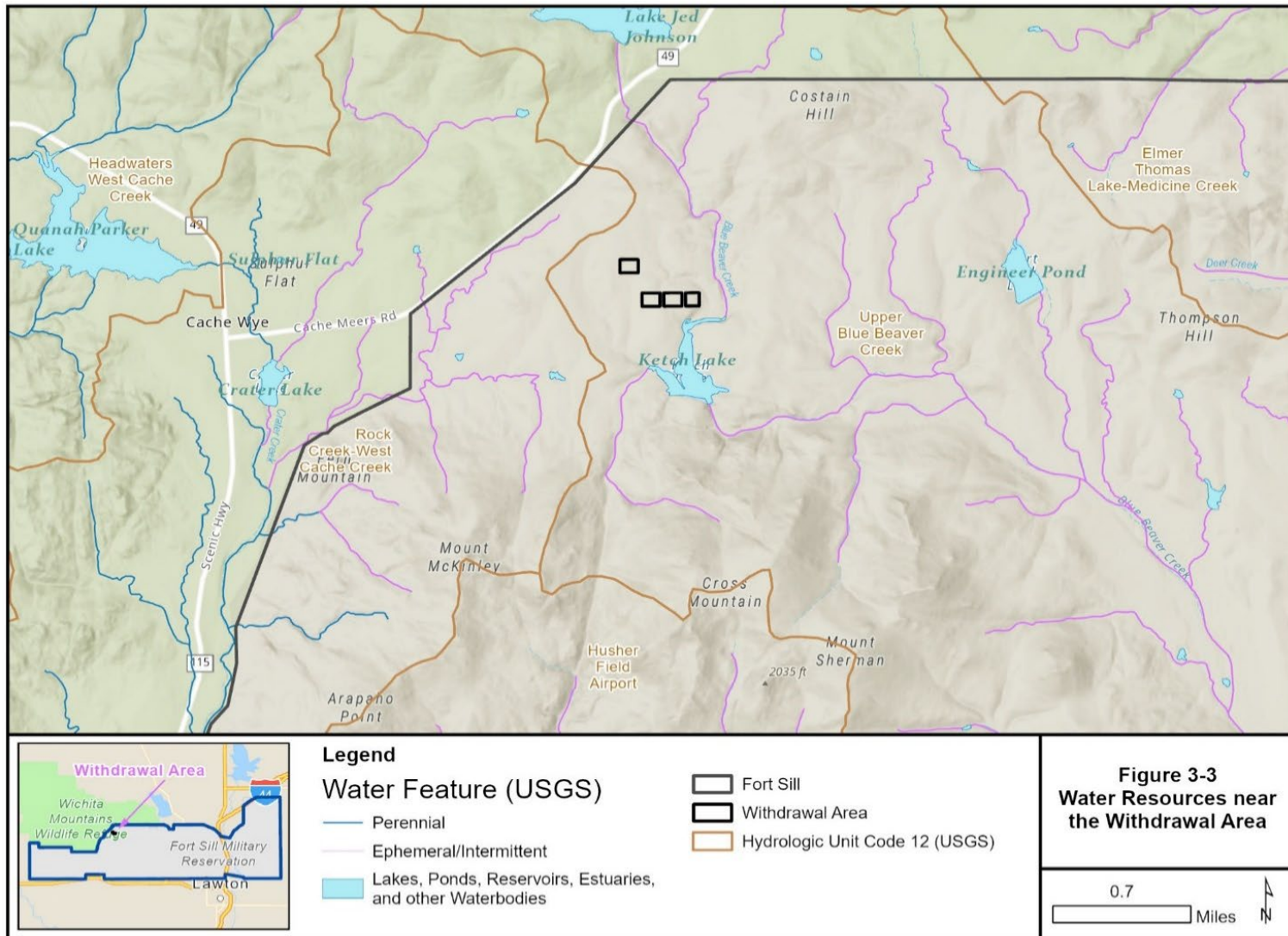


Figure 3-3. Water Resources Near The Withdrawal Area

3.2.7.3 Environmental Consequences

Evaluation Criteria

Effects on water resources would be considered significant if the proposed action would (1) reduce water availability or supply, (2) exceed safe annual yield of water supplies, (3) adversely affect water quality, (4) threaten or damage hydrology, or (5) violate water resources laws or regulations.

Proposed Action

The proposed action would be consistent with current baseline conditions, and there would be no change to water resources from the proposed action. No construction or new land disturbance activities that could cause new erosion or runoff are associated with the proposed action. Effects on water resources would not reduce water availability or supply, exceed safe annual yield of water supplies, adversely affect water quality, threaten or damage hydrology, or violate water resources laws or regulations. Therefore, no significant impacts to water resources are anticipated to result from the proposed action.

No Action Alternative

Under the no action alternative, the proposed withdrawal of the Golden Pass Townsite would not occur. While all Fort Sill military training and activities within the Golden Pass Townsite would cease, military training activities immediately adjacent to the site would continue. Therefore, there would be no change in potential impacts to water resources within the vicinity of the Golden Pass Townsite. The BLM would continue managing the 10.32-acres as open land in accordance with the land use allocations and management goals and objectives identified in the 2020 RMP, and would follow the policies in BLM Manual 6720, Aquatic Resource Management.

4.0 REFERENCES

- Cullen, A. 2016. *Seismic Risk of the Meers Fault, SW Oklahoma: A Hoary Giant or Great Imposter*, Search and Discovery Article #51239, AAPG Mid-Continent Section Meeting, Tulsa, OK, April 4–6, 2016.
- Fay, R. O. 2002. *Metallic-Mineral Resources of Oklahoma*, Oklahoma Geological Survey, Special Publication 2002-1, 37 p.
- Federal Emergency Management Agency (FEMA) 2025. Federal Emergency Management Agency. National Flood Hazard Layer. Available online: <https://msc.fema.gov/nfhl>. Accessed March 2025.
- Flood, R.D., et al. 1990. *Geologic controls on radon: Evaluation of intrusive igneous rocks in the Wichita Mountains region*, USGS Open-File Report 93-292.
- Fort Sill. 2013. Final Fort Sill Integrated Cultural Resources Management Plan. Prepared for U.S. Army Garrison, Fort Sill Oklahoma and USACE, Tulsa District. Prepared by R. Christopher Goodwin & Associates, Inc.
- Fort Sill. 2020. Final Integrated Natural Resources Management Plan for Integrated Natural Resources Management Plan Update, U.S. Army Garrison, Fort Sill, Oklahoma. Prepared for USACE Tulsa District and Fort Sill DPW-EQD. Prepared by Auxillo Management Services. February.
- Fort Sill. 2023. Hazardous Material/Hazardous Waste Management Plan.
- Gilbert, M. C. and Donovan, R. N., Editors. 1982. *Geology of the Eastern Wichita Mountains Southwestern Oklahoma*, Oklahoma Geological Survey, Guidebook 21, 168 p.
- Golden Pass Townsite Land Patent 244834, January 25, 1912.
- Ham, W.E. 1969. *Geology of the Southern Oklahoma Aulacogen*, Oklahoma Geological Survey Bulletin 114, 61 p.
- Harlton, B. H. 1963. *Frontal Wichita Fault System of Southwestern Oklahoma*, AAPG Bulletin, 47, p. 1552–1580.
- Havens, J. S. 1983. *Reconnaissance of Ground-Water in Vicinity of Wichita Mountains, Southwestern Oklahoma*, Oklahoma Geological Survey Circular 85, 13 p. pubs.usgs.gov/publication/70046126.
- Johnson, K. S. and Luza, K. V, Editors. 2008. *Earth Science and Mineral Resources of Oklahoma*, Educational Publication No. 9, Oklahoma Geological Survey, 21 p.

- Johnson, K. S., and Luza, K. V. 1986. *Lead and Zinc Deposits in Oklahoma*, Oklahoma Geological Survey Bulletin 141, 85 p.
- Merritt, C. A. 1940a. *Iron Ores*, Oklahoma Geological Survey Mineral Report 4, 38 p.
- MilBases. 2025. Weather and Climate at Fort Sill Army Base. Available online: <https://www.milbases.com/oklahoma/fort-sill-army-base>. Accessed March 2025.
- National Weather Service (NWS). 2022. Watches, Warnings and Advisories. Red Flag Warning.
- Oklahoma Biological Survey (OBIS). 2025. *Biodiversity Information System Database Search for Comanche County*.
- Oklahoma Department of Transportation. 2021. *Geotech Specifications*, ODOT Materials Division, Sections on problem soils and subgrade mitigation.
- Pérez-Rey, I., Riquelme, A., González-de Santos, L. M., and Estévez-Ventosa, X. 2019. *A Multi-Approach Rockfall Hazard Assessment on a Weathered Granite Natural Rock Slope. Landslides*, 16 (4), 2005-2022. DOI:10.1007/s 10346-019-01208-5.
- Public Land Order (PLO) No. 6183, U.S. Bureau of Land Management, Oklahoma; Withdrawal of Fort Sill Military Reservation, February 25, 1982 (47 FR 9842).
- Public Land Order (PLO) No. 7518, U.S. Bureau of Land Management, Extension of PLO No. 6183; Oklahoma, March 8, 2002 (67 FR 117707).
- Quaternary Resource Investigations (QRI)-Tetra Tech Joint Venture (JV). 2025. Final Cultural Resources Assessment Survey of Blocks 15, 34, 35, and 36 of the Golden Pass Townsite, U.S. Army Garrison Fort Sill. April.
- QRI-Tetra Tech JV. 2024. Draft Biological Assessment of Blocks 15, 34, 35, and 36 of the Golden Pass Townsite. August.
- Natural Resources Conservation Service (NRCS) United States Department of Agriculture (USDA). 2025. *Soil Survey Geographic (SSURGO) Database for Comanche County, Oklahoma*. Retrieved from Web Soil Survey.
- The Hudson Institute of Mineralogy, (n.d.), Location of Mines in Vicinity of Sections 19 and 20, Township 3W, Range 13W, Retrieved from: <https://www.mindat.org/loc-22704.html>.
- The Specifications for Description of Land (2017). Available from: <https://www.blm.gov/sites/default/files/SpecificationsForDescriptionsOfLand.pdf>
- U.S. Army Corps of Engineers (USACE). 2023. Environmental Assessment for the Fort Sill Maneuver Short Range Air Defense Battalion Stationing. USACE, Tulsa District, Contract Number W912BV22F0027; W912BV19D0014, February 2023.

U.S. Army. 2005. AR 350-19, The Army Sustainable Range Program.

U.S. Army. 2007. AR 200-1, Environmental Protection and Enhancement.

U.S. Bureau of Land Management. 2008. Manual Handbook H-1790-1.

U.S. Bureau of Land Management. 2020. Oklahoma, Kansas, Texas Approved Regional Management Plan.

U.S. Department of Agriculture National Resources Conservation Service (NRCS). 2025. Soil Survey for Comanche County, Oklahoma.

U.S. Department of Defense (DoD). 2018. Instruction 4710.02. DoD Interactions with Federally Recognized Tribes.

U.S. DoD. 2025. National Environmental Policy Act Implementing Procedures. 30 June 2025.

U.S. Department of the Interior (DOI). 2025. Departmental Manual (DM) 516 DM 11, Handbook of National Environmental Policy Act Implementing Procedures.

U.S. Environmental Protection Agency (USEPA). 2025a. Green Book Nonattainment/Maintenance Status for Each County by Year for all Criteria Pollutants. Available online: <https://www.epa.gov/green-book>. Accessed March 2025.

U.S. Environmental Protection Agency (USEPA). 2025b. National Ambient Air Quality Standards. Available online: <https://www.epa.gov/criteria-air-pollutants/naaqs-table>. 2024. Accessed March 2025.

U.S. Fish and Wildlife Service (USFWS). 2014. Memorandum of Understanding between the U.S. Department of Defense and the U.S. Fish and Wildlife Service to Promote the Conservation of Migratory Birds. 2014. Available online:

U.S. Fish and Wildlife Service (USFWS). 2015. Birds of Conservation Concern. September 2015. Available online: <https://www.fws.gov/birds/management/managed-species/birds-of-conservation-concern.php>.

USFWS. 2021. 86 FR 1134. Revocation of MBTA Take Rule.

USFWS. 2025. *IPaC Resource List*. Information for Planning and Consultation (IPaC). Accessed April 28, 2024; updated August 1, 2025. Available online: <https://ipac.ecosphere.fws.gov>.

U.S. Geological Survey. 1949. *Mount Scott 7.5 Minute Quadrangle*, Topographic Map.

U.S. Geological Survey. 2016. *Mount Scott 7.5 Minute Quadrangle*, Topographic Map. U.S. Geological Survey. 2022. *Mount Scott 7.5 Minute Quadrangle*, Topographic Map.

5.0 LIST OF PREPARERS

Timothy Hall, QRI

Ph.D.

45 years of experience

Electromagnetic Spectrum, Hazardous and Toxic Materials and Waste, Utilities, QA/QC

Michelle Bates, Tetra Tech

Master's Degree

25 years of experience

QA/QC

Fonda New, QRI

Bachelor's Degree

45 years of experience

Geological and Soil Resources, Biological Resources

Daniel Berg, Tetra Tech

Bachelor's Degree

12 years of experience

Transportation and Traffic, Land Use, Water Resources, QA/QC

Jamie Childers, Tetra Tech

Master's Degree

24 years of experience

Air Quality, Noise

Lauren Jennings, Tetra Tech

Bachelor's Degree

2 years of experience

Human Health and Safety, Water Resources, Socioeconomics

Patricia Johnson, QRI

Bachelor's Degree

7 years of experience

Biological Resources

Amy Noddings, Tetra Tech

Master's Degree

17 years of experience

Land Use, Socioeconomics, Health and Safety, QA/QC

Erica Smythe, Tetra Tech

Master's Degree

5 years of experience

Cultural Resources

Page intentionally left blank

Appendix A

1912 Land Patent, Executive Orders, and Federal Register Excerpts

4-1040-R.

CERTIFICATE NO. 30.

The United States of America,

To all to whom these presents shall come, Greeting:

WHEREAS, THERE HAS BEEN DEPOSITED IN THE GENERAL LAND OFFICE OF THE UNITED STATES A CERTIFICATE OF THE REGISTER OF THE LAND OFFICE AT LAWTON, OKLAHOMA, WHEREBY IT APPEARS THAT PURSUANT TO SECTIONS 2387, 2388, AND 2389 OF THE REVISED STATUTES OF THE UNITED STATES, AND SECTION 22 OF THE ACT OF CONGRESS OF MAY 2, 1890 --26 STAT., 81--, FULL PAYMENT HAS BEEN MADE BY WARREN H. BROWN, PROBATE JUDGE OF COMANCHE COUNTY, OKLAHOMA, FOR THE SOUTH HALF OF THE SOUTHEAST QUARTER OF SECTION NINETEEN AND THE SOUTHWEST QUARTER OF THE SOUTHWEST QUARTER OF SECTION TWENTY IN TOWNSHIP THREE NORTH OF RANGE THIRTEEN WEST OF THE INDIAN MERIDIAN, OKLAHOMA, EXCEPTING AND RESERVING THEREFROM BLOCKS FIFTEEN, THIRTY-FOUR, THIRTY-FIVE AND THIRTY-SIX, RESERVED FOR SCHOOL AND PARK PURPOSES, AND AGGREGATING TEN AND THIRTY-TWO-HUNDREDTHS ACRES, AS SHOWN BY THE TRIPPLICATE PLATS OF SAID TOWNSITE APPROVED BY THE COMMISSIONER OF THE GENERAL LAND OFFICE JANUARY 9, 1912, CONTAINING, AFTER MAKING THE EXCEPTIONS ABOVE SPECIFIED, ONE HUNDRED NINE AND SIXTY-EIGHT-HUNDREDTHS ACRES, ACCORDING TO THE OFFICIAL PLAT OF THE SURVEY OF THE SAID LANDS, RETURNED TO THE GENERAL LAND OFFICE BY THE SURVEYOR-GENERAL:

NOW KNOW YE, THAT THERE IS, THEREFORE, GRANTED BY THE UNITED STATES, UNTO THE SAID WARREN H. BROWN, THE TRACT OF LAND ABOVE DESCRIBED; TO HAVE AND TO HOLD THE SAID TRACT OF LAND, WITH THE APPURTENANCES THEREOF, UNTO THE SAID WARREN H. BROWN, IN TRUST FOR THE SEVERAL USE AND BENEFIT OF THE OCCUPANTS OF THE TOWNSITE OF GOLDEN PASS, IN SAID COUNTY, ACCORDING TO THEIR RESPECTIVE INTERESTS, AND TO HIS SUCCESSORS IN TRUST AS AFORESAID.

IN TESTIMONY WHEREOF, I, **WILLIAM H. TAFT**

President of the United States of America, have caused these letters to be made Patent, and the seal of the General Land Office to be hereunto affixed.

GIVEN under my hand, at the City of Washington, the **TWENTY-FIFTH**

(SEAL)

day of **JANUARY** in the year of our Lord one thousand nine hundred and **TWELVE** and of the Independence of the

United States the one hundred and **THIRTY-SIXTH.**

By the President:

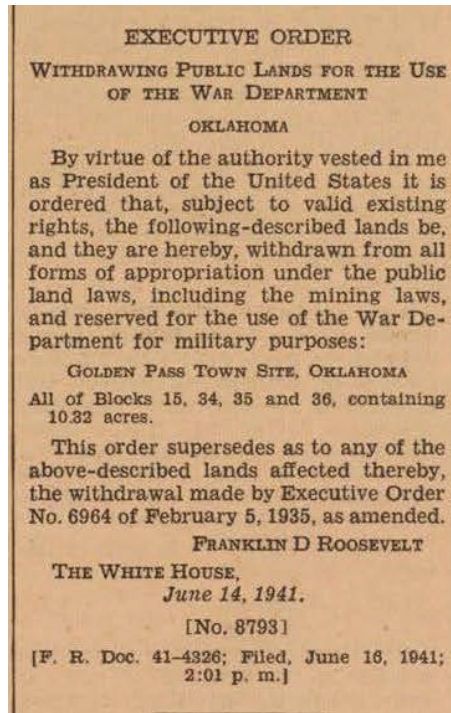
By

Wm. H. Taft
H. O. LeRoy Secretary,
H. W. Langford
 Recorder of the General Land Office.


RECORD OF PATENTS: Patent Number **244834**
 6-2152

1222066

Land Patent Number 244834 – January 25, 1912



**EO 8793, FR 41-4326, Withdrawing Public Lands for the Use of the War Department, Oklahoma,
June 16, 1941**



FEDERAL REGISTER

VOLUME 10 NUMBER 44

Washington, Friday, March 2, 1945

The President

EXECUTIVE ORDER 9525

AMENDMENT OF EXECUTIVE ORDER 9356 OF JUNE 24, 1943, PRESCRIBING REGULATIONS GOVERNING THE FURNISHING OF CLOTHING IN KIND OR PAYMENT OF CASH ALLOWANCES IN LIEU THEREOF TO ENLISTED PERSONNEL OF THE NAVY, THE COAST GUARD, THE NAVAL RESERVE, AND THE COAST GUARD RESERVE

By virtue of and pursuant to the authority vested in me by section 10 of the Pay Readjustment Act of June 16, 1942 (56 Stat. 359, 363); it is ordered that Executive Order 9356 of June 24, 1943,¹ as amended, prescribing regulations governing the furnishing of clothing in kind or payment of cash allowances in lieu thereof to enlisted personnel of the Navy, the Coast Guard, the Naval Reserve, and the Coast Guard Reserve, be, and it is hereby, further amended by adding to section A thereof subsection 9 to read as follows:

9. Enlisted men of the Navy, Naval Reserve, Coast Guard, and Coast Guard Reserve, returned to the United States from overseas (including Alaska) as patients, who, due to the exigencies of the service and through no fault of their own, have become separated from or have lost their clothing and have not been reimbursed therefor:

(a) Chief petty officers, cooks, and stewards; an issue of clothing in kind not to exceed in value..... \$100.00

(b) Enlisted men in other ratings; an issue of clothing in kind not to exceed in value..... 60.00

In the event claim for reimbursement for lost personal property is later presented by an individual receiving issues of clothing under this subsection, the value of such clothing shall be deducted from such claim by the adjudicating authority.

¹ 8 F.R. 8781.

This amendment shall become effective as of January 1, 1945.

FRANKLIN D ROOSEVELT

THE WHITE HOUSE,
February 28, 1945.

[F. R. Doc. 45-5315; Filed, Mar. 1, 1945; 11:17 a. m.]

EXECUTIVE ORDER 9526

AMENDING CERTAIN EXECUTIVE AND PUBLIC LAND ORDERS WITHDRAWING PUBLIC LANDS FOR PURPOSES INCIDENT TO THE NATIONAL EMERGENCY AND THE PROSECUTION OF THE WAR

WHEREAS by certain Executive and Public Land orders more than 13,000,000 acres of public lands have been withdrawn and reserved for the use of the military and other branches of the Federal Government for purposes incident to the various phases of the national emergency and the prosecution of the war; and

WHEREAS immediately prior to the issuance of such orders various Executive departments and independent agencies of the Federal Government had primary jurisdiction over, interests in, needs and uses for, or administration of, certain portions of such public lands; and

WHEREAS because of the findings of necessity for the emergency use of such lands, the jurisdiction over, interests in, needs and uses for, and administration of those lands by such departments and agencies were subordinated to such emergency use; and

WHEREAS it is and has been the intention, as expressed in most of the orders, that after the termination of the emergency, the public lands should be returned to the jurisdiction, uses, and administration which existed prior to the withdrawal and reservation of such lands for purposes incident to the national emergency and the prosecution of the war; and

(Continued on next page)

CONTENTS

THE PRESIDENT

	Page
EXECUTIVE ORDERS:	
Clothing or cash allowances for enlisted personnel of Navy, Coast Guard, or Reserves thereof; Executive Order 9356 amended.....	2423
Public lands, amendment of certain Executive and Public Land orders authorizing withdrawal during national emergency.....	2423
York Safe & Lock Co., York County, Pa.; possession of plants relinquished.....	2424
REGULATIONS AND NOTICES	
ALIEN PROPERTY CUSTODIAN:	
Vesting orders:	
Motoshige Boyeke.....	2450
Nakayama, Dengo.....	2450
Okuno, Tsuru.....	2452
Pohlman, Mina Bear.....	2453
COAST GUARD:	
Approval and termination of approval of equipment.....	2463
Non-reversible life preservers for military personnel, waiver of compliance.....	2445
FEDERAL TRADE COMMISSION:	
Hearings:	
Dad's Root Beer Co.....	2449
Dawe's Vitamelk Co.....	2449
FOREIGN ECONOMIC ADMINISTRATION:	
Rayon remnants, revocation of certain licenses for exportation to Cuba.....	2430
INTERIOR DEPARTMENT:	
Red Lake Reservation, Minn.; order of restoration.....	2448
INTERNAL REVENUE BUREAU:	
Affiliated corporations, income and excess profits taxes.....	2425
INTERSTATE COMMERCE COMMISSION:	
Icing permits:	
Escarole, New York, N. Y.....	2449
Escarole, cabbage, and spinach, Jersey City, N. J.....	2450
Peas, Chicago, Ill.....	2449
Spinach, Waverly, N. J.....	2450

(Continued on next page)

EO 9526, 10 FR 2423, Amending Certain Executive and Public Land Orders, March 2, 1945



Published daily, except Sundays, Mondays, and days following legal holidays, by the Division of the Federal Register, the National Archives, pursuant to the authority contained in the Federal Register Act, approved July 26, 1935 (49 Stat. 509, as amended; 44 U.S.C. ch. 8B), under regulations prescribed by the Administrative Committee, approved by the President. Distribution is made only by the Superintendent of Documents, Government Printing Office, Washington 25, D. C.

The regulatory material appearing herein is keyed to the Code of Federal Regulations, which is published, under 50 titles, pursuant to section 11 of the Federal Register Act, as amended June 19, 1937.

The FEDERAL REGISTER will be furnished by mail to subscribers, free of postage, for \$1.50 per month or \$15.00 per year, payable in advance. The charge for individual copies (minimum 15¢) varies in proportion to the size of the issue. Remit check or money order, made payable to the Superintendent of Documents, directly to the Government Printing Office, Washington 25, D. C.

There are no restrictions on the republication of material appearing in the FEDERAL REGISTER.

NOTICE

Book 1 of the 1943 Supplement to the Code of Federal Regulations may be obtained from the Superintendent of Documents, Government Printing Office, at \$3.00 per copy. This book contains the material in Titles 1-31, including Presidential documents, issued during the period from June 2, 1943, through December 31, 1943.

CONTENTS—Continued

OFFICE OF DEFENSE TRANSPORTATION:	Page
Irish potatoes, motor transportation from designated areas	2448
Line-haul shipments, Minneapolis-St. Paul, Minn.	2454
OFFICE OF ECONOMIC STABILIZATION:	
Tobacco, diversion to nicotine	2445
OFFICE OF PRICE ADMINISTRATION:	
Adjustments and pricing orders:	
Associated Metals	2457
Buckeye Tobacco Co.	2456
Frame, Joe, & E. J. Hawks, Jr., and Albert Kristianson	2457
Galter Mfg. Co.	2459
Jacobsen, Peter N., Tobacco Co.	2456
Lippman, L. J.	2456
Machine Products Co.	2458
Quality Woodworkers	2458
Riese, Joseph P.	2460
Ross Mfg. Co.	2458
Singleton, J. R.	2456
Beef and veal, deficient areas designated (MPR 169, Order 73)	2460
Bituminous coal, District 7; adjustments (MPR 120, Order 1299)	2459

CONTENTS—Continued

OFFICE OF PRICE ADMINISTRATION—Continued.	Page
Food and drink sold for immediate consumption in dining cars (Restaurant MPR 1, Am. 3)	2435
Gasoline rationing (RO 5C, Am. 91)	2433
General maximum price regulation, exceptions of commodity transactions from (Rev. SR 1, incl. Am. 1-93)	2435
Ice boxes, new (MPR 399, Am. 16)	2433
Iron and steel products (RPS 6, Am. 12)	2432
Export price of certain product (2d Rev. Max. Export Price Reg., Am. 15)	2432
Resale (RPS 49, Am. 29)	2432
Paper (2d Rev. SR 14, Am. 3)	2432
Pianos (MPR 188, Am. 1 to Rev. Order 2525)	2460
Rent regulations, procedure for adjustments, amendments, etc. (Rev. Procedural Reg. 3, Am. 11)	2431
SECURITIES AND EXCHANGE COMMISSION:	
Hearings, etc.:	
Indiana Gas Utilities Co. and Associated Electric Co.	2461
International Hydro-Electric System	2460
New York Power & Light Corp. and Niagara Hudson Power Corp.	2462
North American Co.	2461
United Corp.	2461
SOLID FUELS ADMINISTRATION FOR WAR:	
Bituminous coal in Utah	2445
WAR DEPARTMENT:	
Hudson River, N. Y. and N. J., approved fishing areas	2445
WAR FOOD ADMINISTRATION:	
Livestock and meats; delegation of authority to Administrator and Alternate Administrator under WFO 126 (WFO 126-2)	2425
WAR MANPOWER COMMISSION:	
Employment stabilization program; Holyoke-Northampton, Mass.	2463
WAR PRODUCTION BOARD:	
Controlled materials plan; maintenance, repair, and operating supplies (CMP Reg. 5, Am. 2)	2431
Suspension orders, etc.:	
Acme Shoe Mfg. Co.	2430
California Rough "Eez"	2430
Ives, Richard, Co.	2430
National Can Corp.	2465
Uranium (M-285)	2431
WAR SHIPPING ADMINISTRATION:	
Rate ceilings for certain vessels, suspension	2448
Time charters, amended:	
Dry cargo vessels	2446
Foreign flag	2447
Tank vessels	2446
Foreign flag	2447

WHEREAS it is appropriate that, in future determinations of the public purposes for which such lands shall be used, reserved, or administered after the emer-

gency, those departments and agencies of the Federal Government which had prior jurisdiction over, interests in, or administration of such lands should have restored to them such jurisdiction over, interests in, or administration of the lands as existed prior to the withdrawal and reservation of the lands for purposes incident to the national emergency and the prosecution of the war;

NOW, THEREFORE, by virtue of the authority vested in me as the President of the United States as set forth in the orders hereinafter enumerated, it is ordered as follows:

The Executive orders and Public Land orders hereinafter enumerated, withdrawing and reserving public lands for uses incident to the national emergency and the prosecution of the war, are hereby amended by adding to each of the said orders the following paragraph:

"The jurisdiction granted by this order shall cease at the expiration of the six months' period following the termination of the unlimited national emergency declared by Proclamation No. 2487 of May 27, 1941 (55 Stat. 1647). Thereupon, jurisdiction over the lands hereby reserved shall be vested in the Department of the Interior, and any other department or agency of the Federal Government according to their respective interests then of record. The lands, however, shall remain withdrawn from appropriation as herein provided until otherwise ordered."

Executive Order Numbers: 8101, 8102, 8305, 8325, 8343, 8450, 8507, 8508, 8577, 8578, 8579, 8638, 8651, 8652, 8725, 8755, 8788, 8789, 8792, 8793, 8794, 8830, 8831, 8847, 8865, 8872, 8874, 8877, 8884, 8892, 8915, 8925, 8927, 8932, 8954, 8957, 8992, 8989, 9000, 9014, 9019, 9020, 9026, 9029, 9042, 9053, 9081, 9086, 9104, 9107, 9109, 9114, 9143, 9215.

Public Land Order Numbers: 1, 3, 4, 6, 7, 9, 10, 11, 13, 15, 16, 18, 21, 22, 24, 25, 26, 27, 28, 31, 33, 34, 35, 37, 39, 40, 43, 44, 50, 51, 55, 56, 57, 58, 59, 60, 62, 63, 64, 66, 72, 74, 75, 76, 80, 81, 83, 85, 87, 88, 89, 90, 93, 94, 97, 98, 105, 109, 110.

Any provision in any of the orders hereinabove enumerated which is in conflict with this order is hereby superseded to the extent of such conflict: *Provided, however,* That any provision for the earlier return of jurisdiction over the public lands in any of said orders shall remain operative.

FRANKLIN D. ROOSEVELT

THE WHITE HOUSE,

February 28, 1945.

[F. R. Doc. 45-3314; Filed, Mar. 1, 1945; 11:17 a. m.]

EXECUTIVE ORDER 9527

RELINQUISHING POSSESSION OF THE PLANTS OF YORK SAFE AND LOCK COMPANY, YORK COUNTY, PENNSYLVANIA

WHEREAS by Executive Order No. 9416, dated January 21, 1944, the Secretary of the Navy was authorized and directed to take possession of and operate the plants and facilities of York Safe

¹ 9 F.R. 936.

43 CFR Public Land Order 6183

[NM 36236]

Oklahoma; Withdrawal Fort Sill Military Reservation

AGENCY: Bureau of Land Management, Interior.

ACTION: Public land order.

SUMMARY: This action withdraws 10.32 acres of public land and reserves it for troop maneuvers and field artillery firing exercises at Fort Sill for a period of 20 years.

EFFECTIVE DATES: March 8, 1982.

FOR FURTHER INFORMATION CONTACT: Stella V. Gonzales, New Mexico State Office 505-988-6211.

By virtue of the authority vested in the Secretary of the Interior by Section 204 of the Federal Land Policy and Management Act of 1976, 90 Stat. 2751; 43 U.S.C. 1714, it is hereby ordered as follows:

1. Subject to valid existing rights, the following described public lands are hereby withdrawn from settlement, sale, location, or entry, under the general land laws, including the mining laws, 30 U.S.C. Ch. 2, but not the mineral leasing laws, and reserved for the use of the Department of the Army for military purposes.

Indian Meridian, Oklahoma

T. 3 N., R. 13 W.,
Sec. 19 Block 15 Goldenpass Townsite located in SE $\frac{1}{4}$ SE $\frac{1}{4}$;
Sec. 20, Blocks 34, 35 and 36 Goldenpass Townsite located in SW $\frac{1}{4}$ SW $\frac{1}{4}$.

The area described contains 10.32 acres in Comanche County, Oklahoma.

2. The withdrawal made by this order does not alter the applicability of those public land laws governing the use of the lands under lease, license, or permit, or governing the disposal of their mineral or vegetative resources other than under the mining laws.
3. This withdrawal shall remain in effect for a period of 20 years from the date of this order.

Garrey E. Carruthers,
Assistant Secretary of the Interior.
February 25, 1982.
[FR Doc. 82-6121 Filed 3-5-82; 8:45 am]
BILLING CODE 4310-84-M

PLO No. 6183, 47 FR 9842, Oklahoma; Withdrawal Fort Sill Military Reservation, February 25, 1982

DEPARTMENT OF THE INTERIOR
Bureau of Land Management
[NM-044-1430-ET; OKNM 36236]
Public Land Order No. 7518; Extension of Public Land Order No. 6183; Oklahoma
AGENCY: Bureau of Land Management, Interior.
ACTION: Public Land Order.
SUMMARY: This order extends Public Land Order No. 6183 for an additional 20-year period. This extension is

necessary to continue the protection of the land for use by the Department of the Army for military purposes at Fort Sill, Oklahoma.

EFFECTIVE DATE: March 8, 2002.

FOR FURTHER INFORMATION CONTACT: Clarence F. Hougland, BLM New Mexico State Office, P.O. Box 27115, Santa Fe, New Mexico, 505-438-7593.

SUPPLEMENTARY INFORMATION: By virtue of the authority vested in the Secretary of the Interior by Section 204 of the Federal Land Policy and Management Act of 1976, 43 U.S.C. 1714 (1994), it is ordered as follows:

1. Public Land Order No. 6183 (47 FR 9842, March 8, 1982), which withdrew land from use by the Department of the Army, is hereby extended for an additional 20-year period.

2. Public Land Order No. 6183 will expire March 7, 2022, unless, as a result of a review conducted before the expiration date pursuant to Section 204(f) of the Federal Land Policy and Management Act of 1976, 43 U.S.C. 1714(f) (1994), the Secretary determines that the withdrawal shall be extended.

Dated: February 28, 2002.

Rebecca W. Watson,
Assistant Secretary for Land and Minerals Management.

[FR Doc. 02-6231 Filed 3-14-02; 8:45 am]

BILLING CODE 4310-FB-P

PLO No. 7518, 02 FR 6231; Extension of PLO No. 6183; Oklahoma, February 28, 2002